



LIGHTS BY
LINEA

EST. 1990

LINEAR & ARCHITECTURAL

BROCHURE

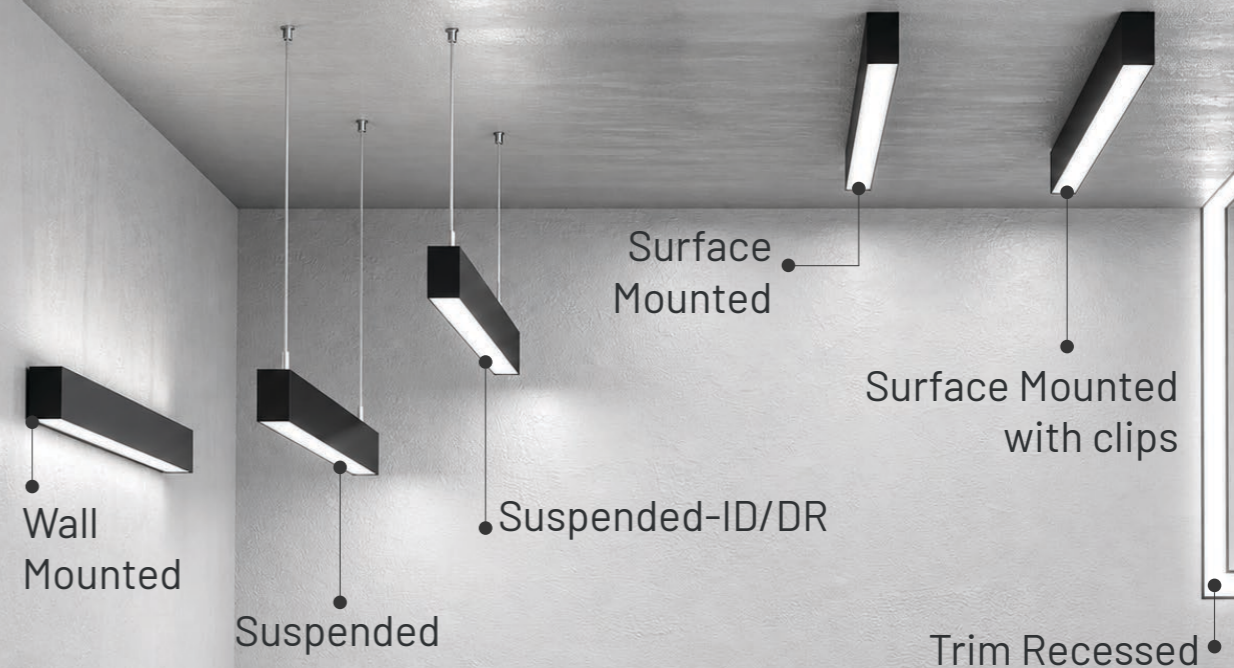
DESIGN & TECHNICAL CERTAINTY

OUR VISION

Our Vision is to establish ourselves as the premier and trusted brand in the fields of Architectural, Retail and Commercial lighting throughout South Africa.

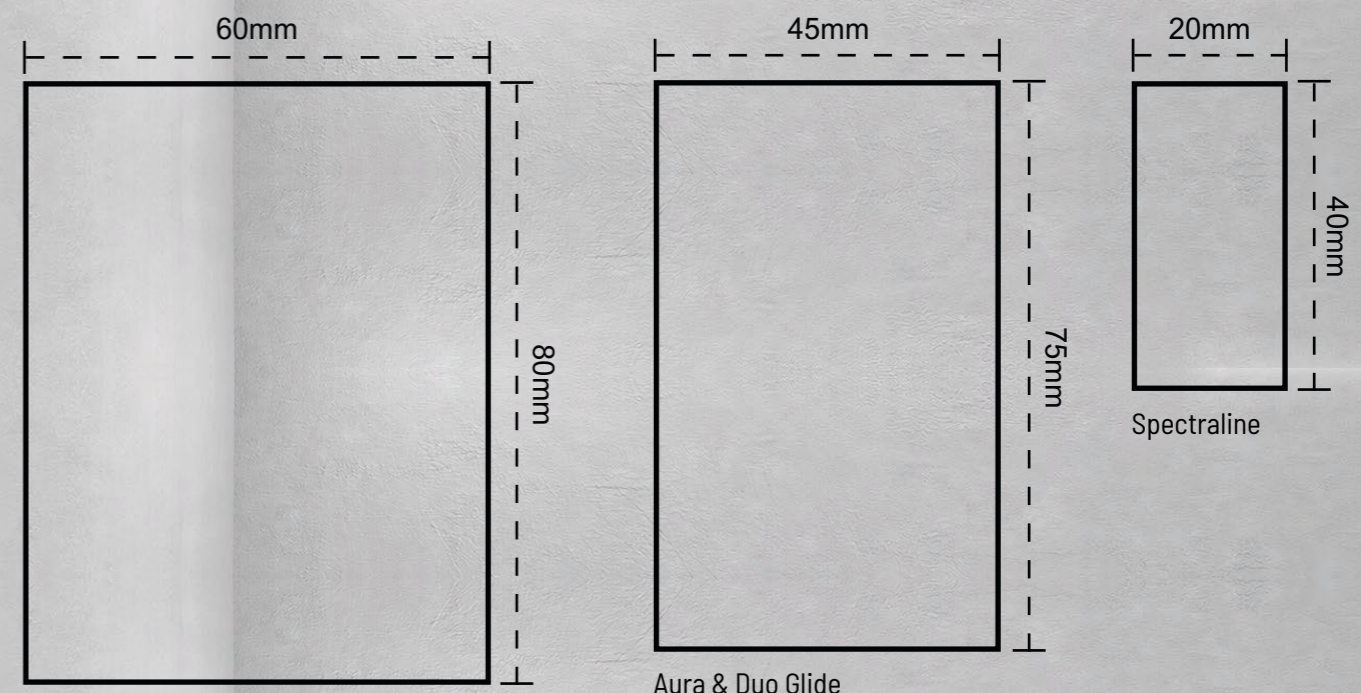
Our aspiration includes the expansion of the Lights By Linea family to encompass a wholesale division and a spectrum of services aligned with the lighting industry such as design and installation services, strategically positioned across various locations within the country

MULTIPLE INSTALLATIONS



ALUMINIUM PROFILE

- Maximum length for a single power feed is 60m; however, a maximum of 45m is recommended when connected.
- Maximum length for opal diffuser up to 40m per roll
- Maximum length for microprismatic up to 20m per roll
- Basic length 1.2m; 1.5m & customised lengths



Linea & Duo Nova
Duo Luxe & Aura Beam

Aura & Duo Glide

Spectraline

Scale: 1:1(A4)

MULTIPLE APPLICATIONS



Office Lighting



Educational Facilities



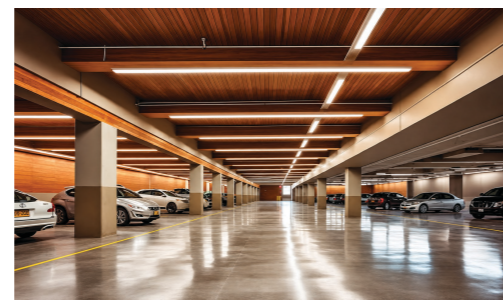
Retail Lighting



Leisure & Sports Facilities



Public Spaces



Parking Facilities



Healthcare Facilities



Showrooms



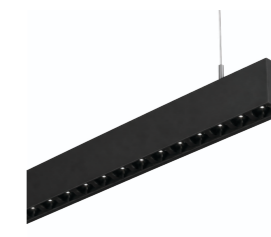
Industrial & Production Facilities

INDEX

Linear & Retail Fittings



Aura Beam - pg.6



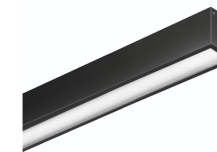
Aura Glide - pg.7



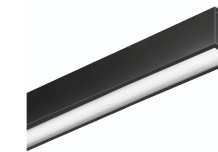
Duo Glide & Duo Luxe
- pg.8



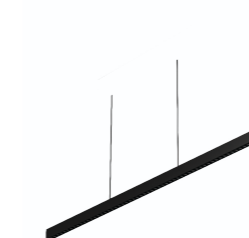
Linea Nova & Duo Nova
- pg.9



Linea Deep - pg.10



Linea Niche - pg.11



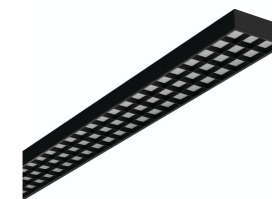
Spectraline - pg.12



Curve Linear System
- pg.13



Rayform - pg.14

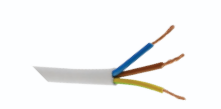
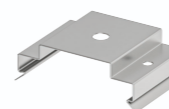


Xray - pg.14



Sky Walker X - pg.16

Accessories - pg.17



AURA BEAM – ID/DR LIGHTING



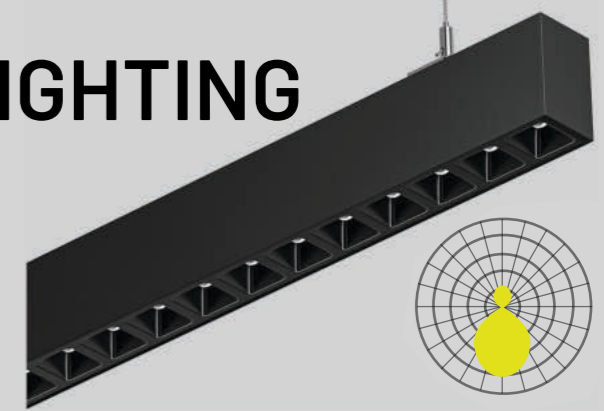
Finish:



AURA GLIDE – ID/DR LIGHTING

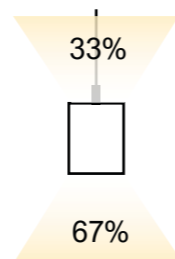


Finish:

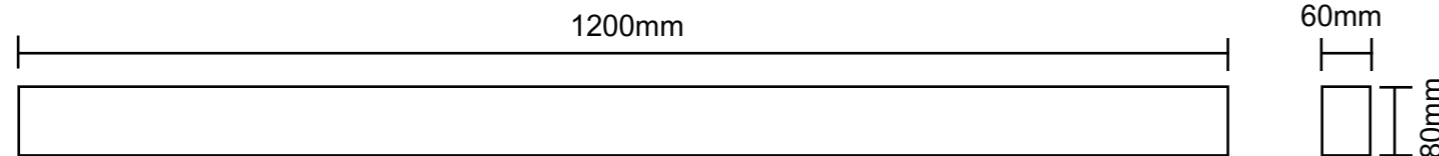


KEY FEATURES:

Material: Aluminium Profile + PC Lens + PMMA Louvre + Die-Cast End Caps
 CCT: 4000K
 Beam angle: 60°
 Rated Life: 50 000 Hours L90B10
 Sensor & Emergency Version Available on Request
 Colour: Black & White
 Joinable



DIMENSIONS:



SPECIFICATIONS:

Series	Length	Item Num	Lumen	Watt	Light Efficacy	CRI	CCT
Single	1200mm	LSL10324	4800lm	32W	130lm/W	90	4000K
Continuous	1200mm	LSL10324	4800lm	32W	130lm/W	90	4000K

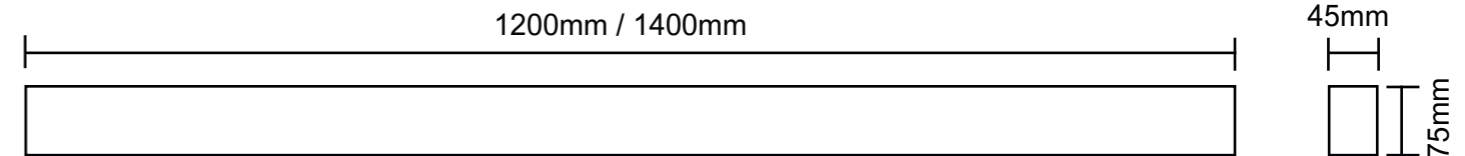
KEY FEATURES:

Material: Aluminium Profile + PC Louvre + Die-Cast End Caps
 CCT: 3000K / 3500K / 4000K 3-CCT Selectable
 Beam angle: 60°
 Rated Life: 50 000 Hours L90B10
 Sensor & Emergency Version Available on Request
 Colour: Black & White
 Joinable



CCT Selectable Switch

DIMENSIONS:



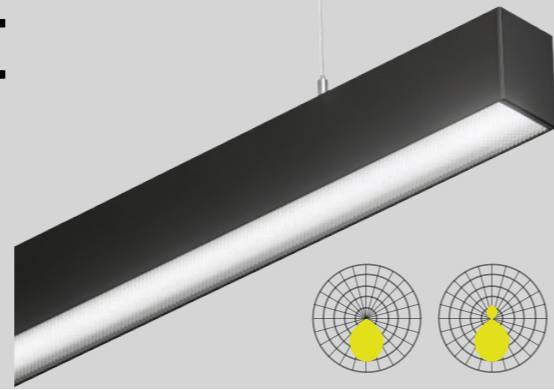
SPECIFICATIONS:

Series	Length	Item Num	Lumen	Watt	Light Efficacy	CRI	CCT
Single	1200mm	LSL11403	5200lm	40W	130lm/W	90	3000K 3500K 4000K
	1400mm	LSL11503	6500lm	50W	130lm/W	90	4000K
Continuous	1200mm	LSL11403	5200lm	40W	130lm/W	90	3000K 3500K 4000K
	1400mm	LSL11503	6500lm	50W	130lm/W	90	4000K

DUO GLIDE & DUO LUXE

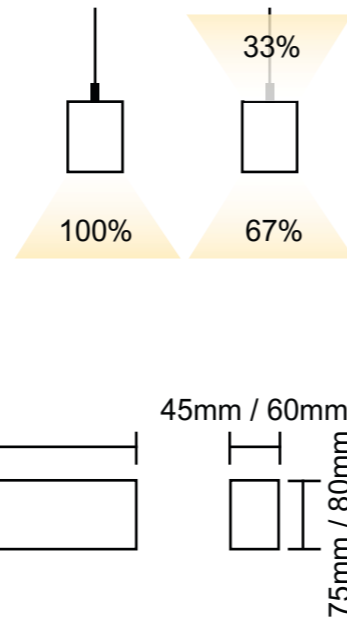


Finish:

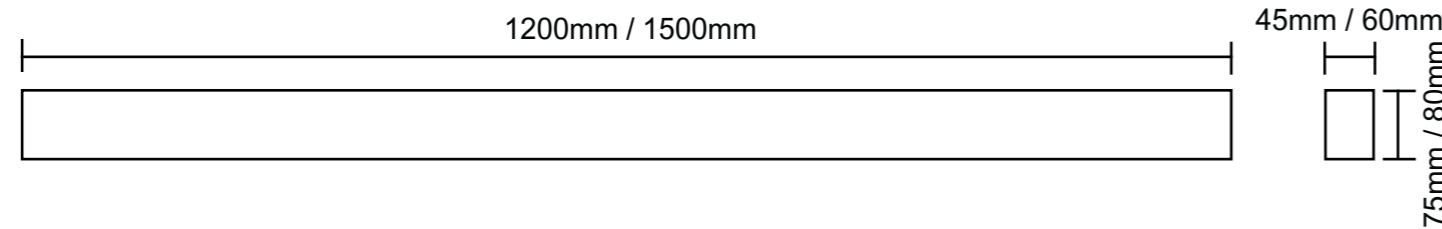


KEY FEATURES:

Material: Aluminium Profile + PC Diffuser + Die-Cast End Caps
 CCT: 3000K / 3500K / 4000K 3-CCT Selectable & Fixed CCT
 Beam angle: 110° & 90° Up / 120° Down
 Rated Life: 50 000 Hours L90B10
 Sensor & Emergency Version Available on Request
 Colour: Black & White
 Joinable: Duo Luxe only



DIMENSIONS:



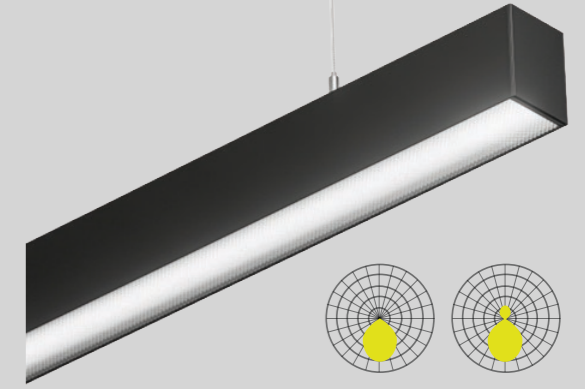
SPECIFICATIONS:

Series	Dimensions LxWxH	Item Num	Lumen	Watt	Light Efficacy	CRI	CCT
Duo Glide Single	1200 x 45 x 75mm	LSL14402	5200lm	40W	130lm/W	90	3000K
	1500 x 45 x 75mm	LSL1450	6500lm	50W	130lm/W	90	3500K 4000K
Duo Luxe Single	1200 x 60 x 80mm	LSL0832	4800lm	32W	150lm/W	90	4000K
Duo Glide Continuous	1200 x 45 x 75mm	LSL14402	5200lm	40W	130lm/W	90	3000K
	1500 x 45 x 75mm	LSL1450	6500lm	50W	130lm/W	90	3500K 4000K
Duo Luxe Continuous	1200 x 60 x 80mm	LSL0832	4800lm	32W	150lm/W	90	4000K

LINEA & DUO NOVA

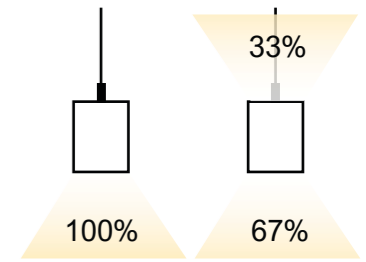


Finish:

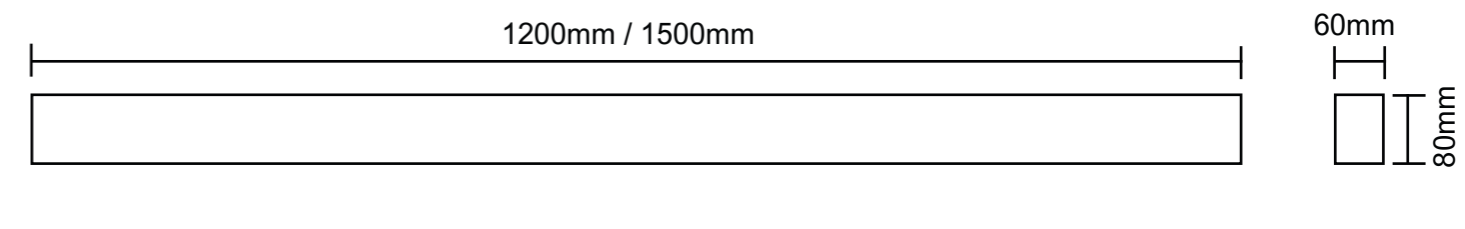


KEY FEATURES:

Material: Aluminium Profile + PC Diffuser + Die-Cast End Caps
 CCT: 3000K / 3500K / 4000K 3-CCT Selectable
 Beam angle: 120° & 110° Down / 120° Up
 Rated Life: 50 000 Hours L90B10
 Sensor & Emergency Version Available on Request
 Colour: Black & White
 Joinable



DIMENSIONS:



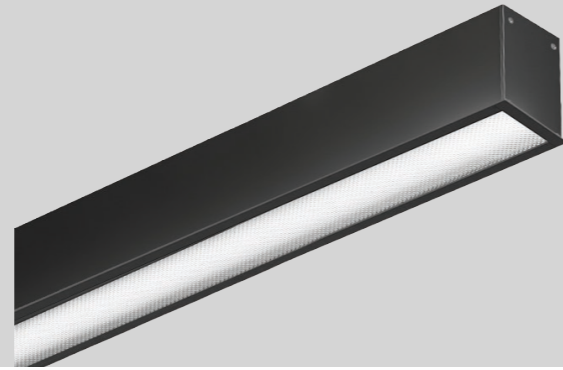
SPECIFICATIONS:

Series	Length	Item Num	Lumen	Watt	Light Efficacy	CRI	CCT
Linea Nova Single	1200mm	LSL1225	3200lm	25W	130lm/W	90	3000K
	1500mm	LSL1230	4000lm	30W	130lm/W	90	3500K 4000K
Duo Nova Single	1200mm	LSL1335	4500lm	35W	130lm/W	90	3000K
	1500mm	LSL1345	6000lm	45W	130lm/W	90	3500K 4000K
Linea Nova Continuous	1200mm	LSL1225	3200lm	25W	130lm/W	90	3000K
	1500mm	LSL1230	4000lm	30W	130lm/W	90	3500K 4000K
Duo Nova Continuous	1200mm	LSL1335	4500lm	35W	130lm/W	90	3000K
	1500mm	LSL1345	6000lm	45W	130lm/W	90	3500K 4000K

LINEA DEEP



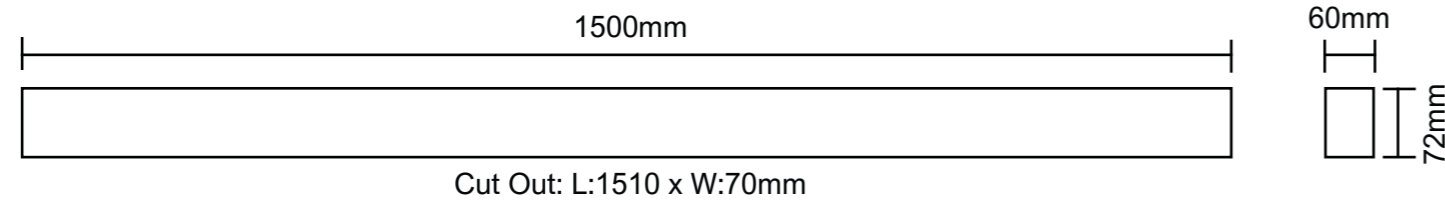
Finish: ●



KEY FEATURES:

Material: Aluminium Profile + PC Diffuser + Die-Cast End Caps
 CCT: 4000K
 Beam angle: 110°
 Rated Life: 50 000 Hours L90B10
 Sensor & Emergency Version Available on Request
 Colour: Black
 Recessed

DIMENSIONS:



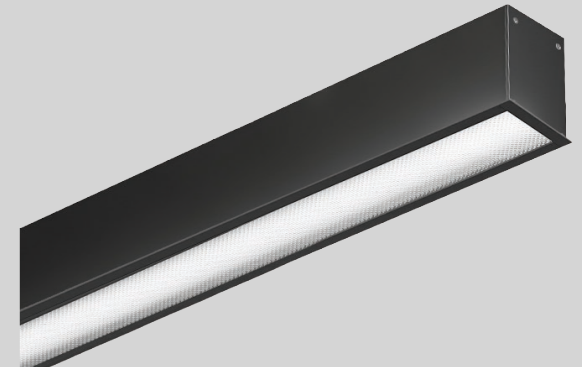
SPECIFICATIONS:

Series	Length	Item Num	Lumen	Watt	Light Efficacy	CRI	CCT
Single	1500mm	LRL1727	4160lm	32W	130lm/W	90	4000K

LINEA NICHE



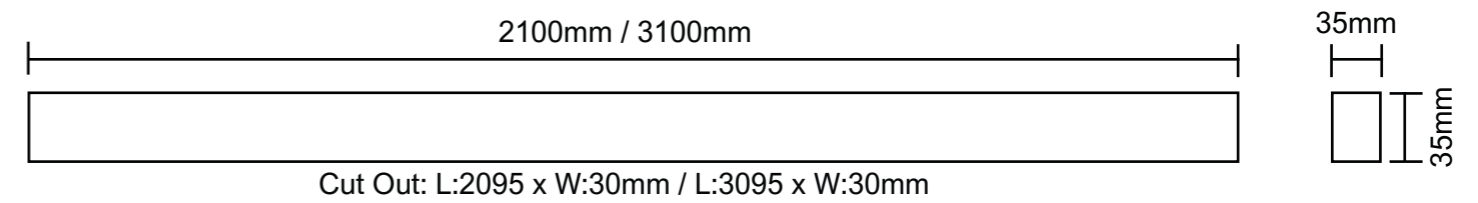
Finish: ●



KEY FEATURES:

Material: Aluminium Profile + PC Diffuser + Die-Cast End Caps
 CCT: 4000K
 Beam angle: 110°
 Rated Life: 50 000 Hours L90B10
 Sensor & Emergency Version Available on Request
 Colour: Black
 Recessed

DIMENSIONS:



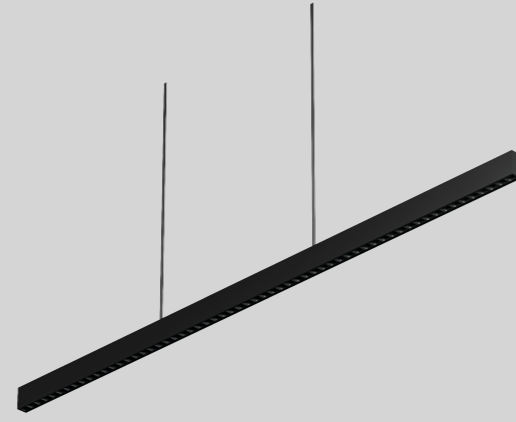
SPECIFICATIONS:

Series	Length	Item Num	Lumen	Watt	Light Efficacy	CRI	CCT
Single	2100mm	LRL1832	4160lm	32W	130lm/W	90	4000K
	3100mm	LRL1847	6000lm	47W	130lm/W	90	4000K

SPECTRALINE PENDANT



Finish:



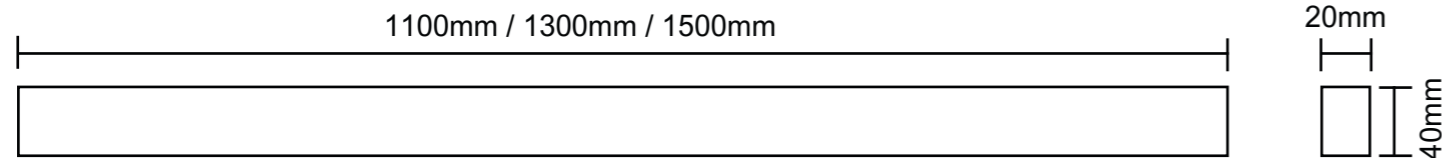
CURVE LINEAR SYSTEM



KEY FEATURES:

Material: Aluminium Profile + PC Diffuser + Die-Cast End Caps
 CCT: 3000K / 4000K
 Beam angle: 60°
 Rated Life: 50 000 Hours L90B10
 Sensor & Emergency Version Available on Request
 Colour: Black & White

DIMENSIONS:



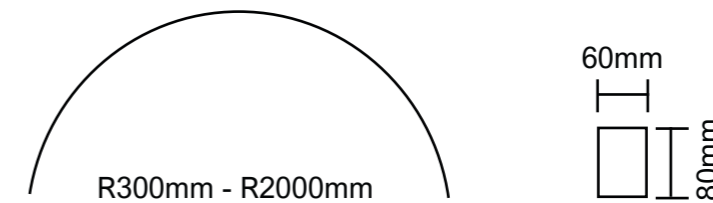
SPECIFICATIONS:

Length	Item Num	Lumen	Watt	Light Efficacy	CRI	CCT
1100mm	LSL1530	3600lm	30W	130lm/W	90	3000K / 4000K
1300mm	LSL1540	4800lm	40W	130lm/W	90	3000K / 4000K
1500mm	LSL1550	6000lm	50W	130lm/W	90	3000K / 4000K

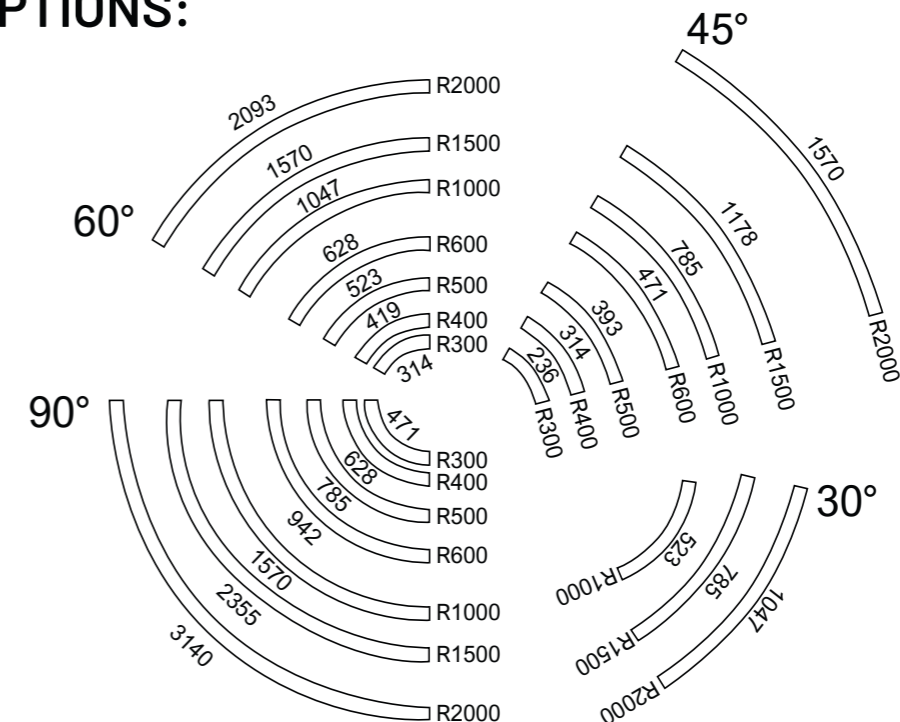
KEY FEATURES:

Material: Aluminium Profile + PC Diffuser + Die-Cast End Caps
 CCT: 3000K / 4000K
 Beam angle: 60°
 Rated Life: 50 000 Hours L90B10
 Sensor & Emergency Version Available on Request
 Colour: Black & White
 Joinable

DIMENSIONS:



PATTERN OPTIONS:



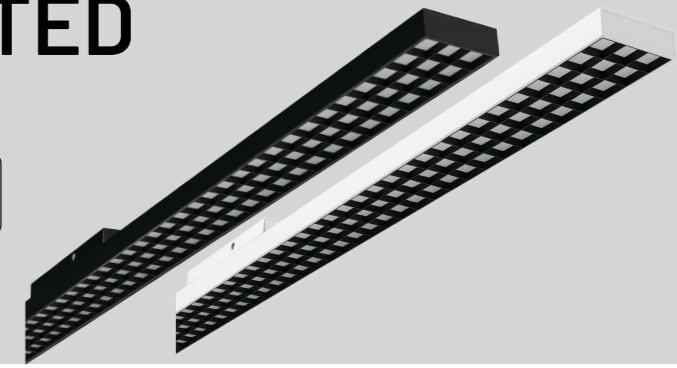
RAYFORM TRACK LINEAR



- 130 lm/w
- CRI 90
- SDCM <3
- CE
- SAA
- IP20
- 5 YR

Finish:

XRAY - TRACK MOUNTED



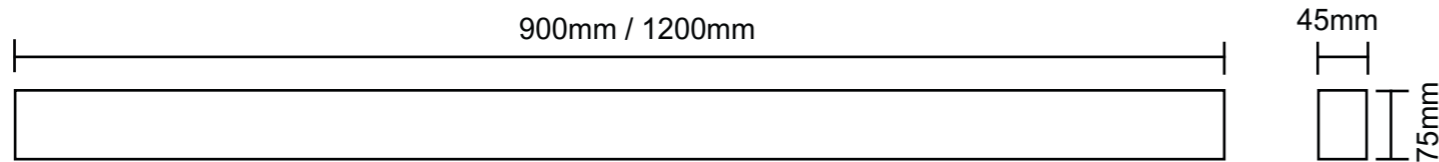
- 160 lm/w
- UGR <19
- CRI 90
- SDCM <3
- CE
- SAA
- IP20
- 5 YR

Finish:

KEY FEATURES:

Material: Aluminium Profile + PC Diffuser
 CCT: 4000K
 Beam angle: 120°
 Rated Life: 50 000 Hours L90B10
 Sensor & Emergency Version Available on Request
 Colour: Black & White
 Dimming: On/Off, DALI, 0/1-10V

DIMENSIONS:



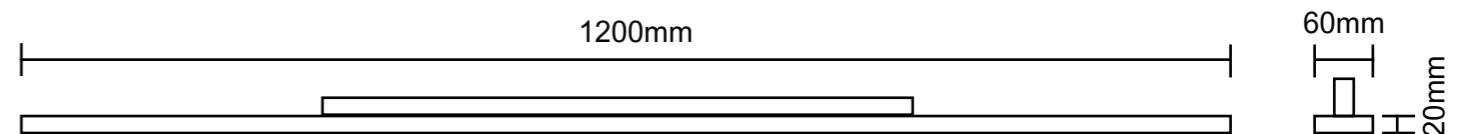
SPECIFICATIONS:

Series	Length	Item Num	Lumen	Watt	Light Efficacy	CRI	CCT	Adaptor
Opal Version	900mm	LTL4230	4000lm	30W	130lm/W	90	4000K	4 Wires 3 Circuits
	1200mm	LTL4240	5200lm	40W	130lm/W	90	4000K	

KEY FEATURES:

Material: Aluminium Housing + PC Lens + Louvre
 CCT: 4000K
 Beam angle: 60°
 Rated Life: 50 000 Hours L90B10
 Sensor & Emergency Version Available on Request
 Colour: Black & White
 Dimming: On/Off, DALI, 0/1-10V

DIMENSIONS:



SPECIFICATIONS:

Series	Length	Item Num	Lumen	Watt	Light Efficacy	CRI	CCT	Adaptor
Track Mounted	1200mm	LTL4040	6400lm	40W	160lm/W	90	4000K	4 Wires 3 Circuits

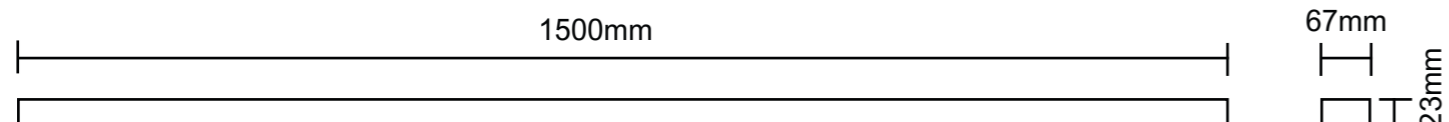
SKY WALKER X - LUMINAIRE MODULE & TRUNKING RAIL



KEY FEATURES:

Material: Roll-Formed Steel + PMMA Lens
 CCT: 4000K
 Beam angle: 60° / 90°
 Rated Life: 50 000 Hours L80B10
 Sensor & Emergency Version Available on Request
 5 Wires for On/Off, 7 Wires for DALI
 Dimmable on Request
 Colour: Black
 Joinable

DIMENSIONS:



SPECIFICATIONS:

Series	Length	Item Num	Lumen	Watt	Light Efficacy	CRI	CCT	Dimming	
Luminaire Module	1500mm	LSL1650	8000lm	50W	160lm/W	>80	4000K	On/Off DALI 0/1-10V	
Series	Length	Item Num	Wires	Dimming					
Trunking Rail	1500mm	LSL16TRUNKING	5 Wires 7 Wires	On/Off DALI 0/1-10V					

ACCESSORIES FOR LINEARS

Item	Picture	Description	Options
LSL08SUSP LSL16SUSP		Suspension kit 1.5m steel wire with clip	
LSL08CLIP LSL16CLIP		Clip for ceiling mounting, 3mm gap	
LSL08ECBL LSL08ECWH		Die-cast aluminium end cap with screws; White/Black	
LSL16ECBL		End Cap PC, White/Black	
LSL13CONNECTOR		Used to fasten connected profiles	
LSL08DIFFPRIS LSL08DIFFFOPAL		Opal flat/rollable diffuser, max 40m/rollable MPD flat/rollable diffuser, max 20m/rollable	
LSL08POWER		Transparent AC power cable, 1.5m 3 Wires for On/Off; 5 Wires for DALI	
LSL16POWER		AC Input cable, 1.5m 3 Wires for On/Off; 5 Wires for DALI	

DESIGN & TECHNICAL CERTAINTY

