

FLUA
LOOK
BOOK
2024

FLUA®

PERFORM YOUR LIGHT

WE ARE FLUA

FLUA Lighting Co., Ltd. is a high-tech enterprise established in 2010 and passed ISO certification. The design center is located in Milan and the brand center is located in Shenzhen. The factory is located on the banks of the Xijiang River in Jianghai District, Jiangmen City, covering an area of 23,000 square meters, with 25,000 square meters of green production workshops and 8,000 square meters of hotel apartment-style living areas.

The company has a complete product design and development team and a professional production line. It mainly produces indoor and outdoor lighting products, covering 13 categories and more than 2,000 products, with a total of more than 20,000 SKUs. The products have been sold to more than 60 countries around the world, more than 100 specialty store. The company has a professional engineering design team, providing personalized and intelligent lighting design, products and services for global homes and commercial spaces, allowing all high-end spaces to use FLUA lamps and making FLUA a fashion leader in the lighting industry.



GREEN PRODUCTION



Photovoltaic plate



Environmental Air Conditioning



Waste Gas Treatment



Sewage treatment



Stacked Plate Sludge Dewatering Machine

Regional Landmark "Cities Where FLUA is Located"



Milan, Italy
Design Center



Shenzhen, China
Marketing Center



Jiangmen, China
R&D Center

BRAND INTRODUCTION

FLUA®

In 2015, FLUA began to prepare for the establishment in Milan, Italy, and hired an Italian planning and design team and a French VI design team to conduct product and market analysis together with a Chinese manufacturer team; it was implemented in all aspects from brand positioning, product selection, VI design, and store image. After a year of preparation, in 2016, FLUA was registered and officially operated in Milan, and a China operation center was established in Shanghai, which has now been relocated to Shenzhen. At the same time, an experience store was set up in Guangdong, China and Tel Aviv, Israel, respectively, and began to set sail to radiate the global market. Today, FLUA has set up nearly 100 stores in major cities in dozens of countries, emphasizing on original design and independent research and development, and also showing that FLUA is international-oriented and based on the world; the company has developed into a household name with high service end quality and consideration.



PURI®

PURI primarily focuses on operating economically practical products, including three major categories: indoor professional, indoor design, and outdoor products.

DRIARTE®

The DRIARTE brand mainly produces and manages standard drivers, wired dimmable drivers, wireless smart drivers, and intelligent electronic peripherals.

“DRIVER”

“ARTE”

"DRIARTE" is derived from the combination of "DRIVER" and "ARTE," aiming to bring users a unique lighting experience and aesthetic value by combining driver technology and artistic elements.

“FORMA”

ITALIAN

—
SHAPE

“LUCE”

ITALIAN

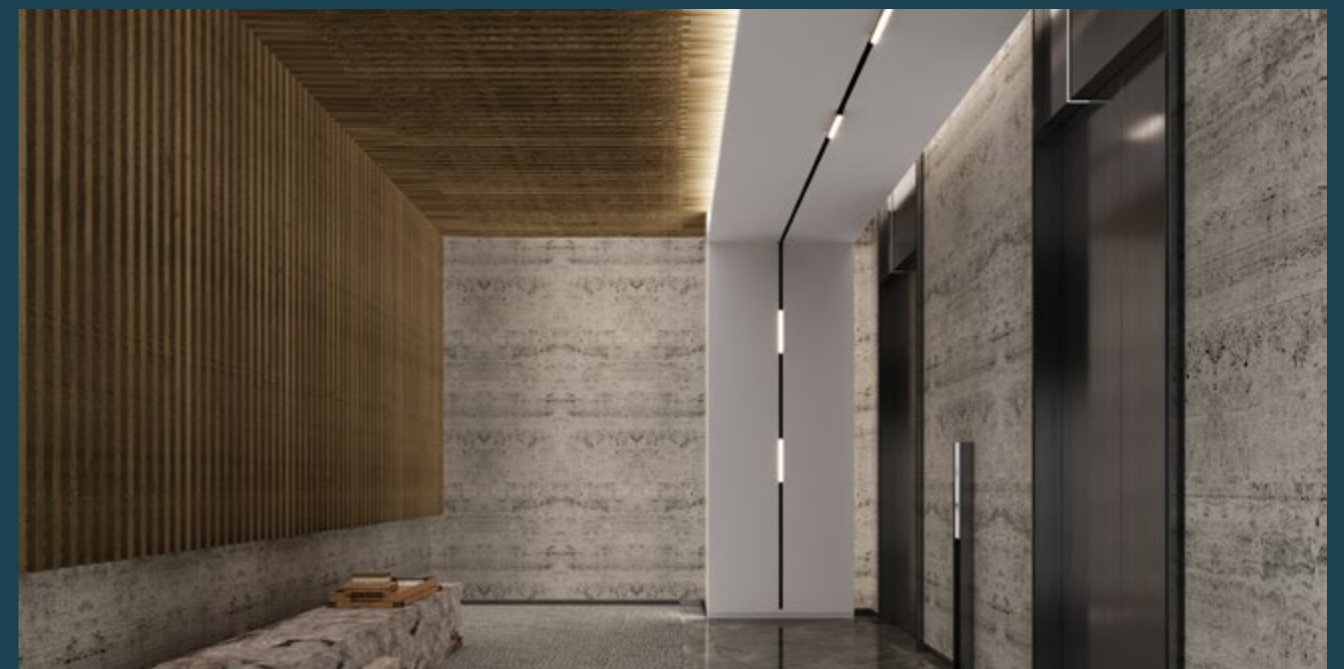
—
LIGHT

FLUA comes from the combination of FORMA and LUCENE, endowing product culture and leading the international lighting vane.

VISION Become a fashion leader in the lighting industry

VALUES Passion, precision, speed, collaboration and integrity

MISSION Make all high-end spaces use FLUA lights



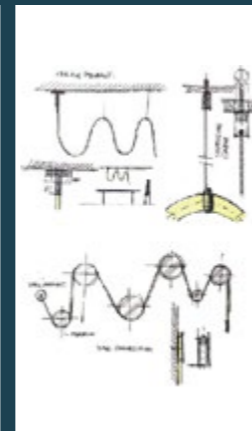
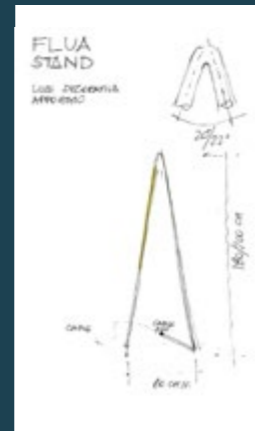
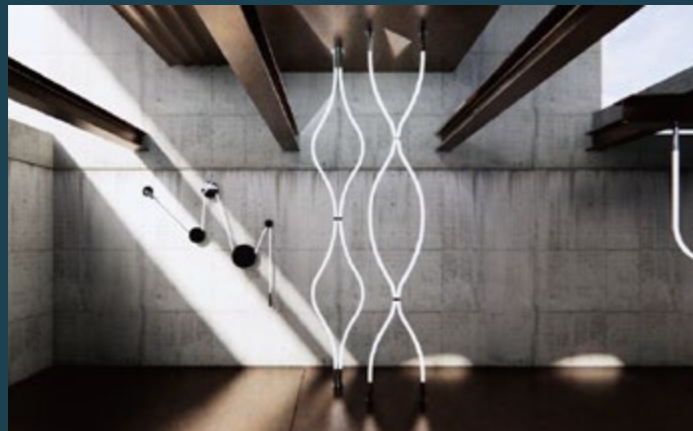
R&D

FLUA lighting, designed in Italy and made in China. More than 30 designers and engineers from the Milan Design Center and the Chinese factory jointly create excellent products.

The R&D team attaches great importance to early reliability assessment of product design. Utilizing the laboratory resources of the R&D center improves the reliability of the product and the feasibility of mass production. Product lifecycle management (PLM) systems facilitate collaboration, data sharing, and cycle design optimization throughout the cycle.



ITALIAN DESIGN



In 2015, Italian designers Marco and Jacopo were invited by FLUA to co-found J&M Architectural Design Studio in Milan. As architects and space designers, they deeply understand user needs and provide FLUA with architectural, space and product design and other services.

The dynamic design team led by him has always kept up with international trends and introduced innovations. They integrate the concept of "integrating architecture, interior design and lighting" into their products, continuously improve product quality, and create unique works.

Many favorite lighting product series have been launched, such as A-frame floor lamp - STAND, adjustable wall lamp - RUOTALA and flexible silicone tube lamp - FILOLUCE, etc.



FLUA brand's chief Italian designers

Jacopo Grignani

Jacopo Grignani, Doctor in Architecture graduated from the Polytechnic University of Milan, Registered Architect and Industrial Designer in Milan, he has been engaged in the Architectural and Industrial Design Industry for over 20 years. Jacopo and his partner Marco established their J&M Architectural Design Studio. He has been devoted to major architecture projects competition and realization, including Villas, Office Buildings, Bars and Home Lifestyle projects etc. And he concentrates his maximum knowledge in the world of Lighting Design field, in the field of professional lighting and Décor lighting application.



Marco Splendore

Doctor in Architecture graduated from the Polytechnic University of Milan, Registered Architect and Industrial Designer in Milan, he has been engaged in the Architectural and Industrial Design Industry for over 20 years. Marco and his partner Jacopo established their J&M Architectural Design Studio. Marco also has his independent studio, which is one of the largest in Italy. In 1998, he launched a personal research tour around the theme "The Roots of Architecture", exploring the major architectural works of great and lesser-known masters in a global perspective.



NEW PRODUCT RESEARCH AND DEVELOPMENT

The FLUA R&D team consists of more than 20 engineers and technicians, covering many fields such as lighting optical design, electronic design, structural design, packaging design, and mechatronics.

The company has passed the ISO9001:2015 quality management system certification, and its products have 3C, CE, TUV, BIS and other multinational certifications. The company has established a quality control system that meets international standards. The test center is equipped with various advanced testing equipment, such as spectrum analyzers, temperature and humidity test chambers, rain testers, immersion testers, multi-channel temperature inspection instruments, temperature I Test the windproof room, etc. Through these devices, the R&D team can comprehensively test the stability and compliance of new products to ensure that they meet international standards, enabling FLUA to design, develop and manufacture high-quality lighting products.



DESIGN PATENT



FLUA has obtained rich intellectual property rights, including 7 product invention patents, more than 30 practical new patents, and more than 70 appearance patents, including various types of innovative designs, such as LED chip pins welding device, unique chandeliers design (such as, such as Akli Ripple, Equilibrio), and table lamps (kerosene lamp type), etc. In addition, FLUA has obtained a number of certifications, including 3C, CE, TUV, BIS, and ERP energy certification. These certifications fully reflect the company's strict requirements for quality, ensure that the product meets international standards, and ensures the stability and high quality of the product.

SHOWROOM INTRODUCTION

Spread across 60 countries worldwide, with nearly a hundred stores. Built upon a strong market foundation, leveraging exceptional manufacturing techniques and efficient supply chain management, we are committed to providing users with outstanding lighting products. Our CRM system is seamlessly integrated to ensure smooth communication and collaboration, tailoring lighting solutions to individual users and empowering the creation of a brighter, more intelligent future.

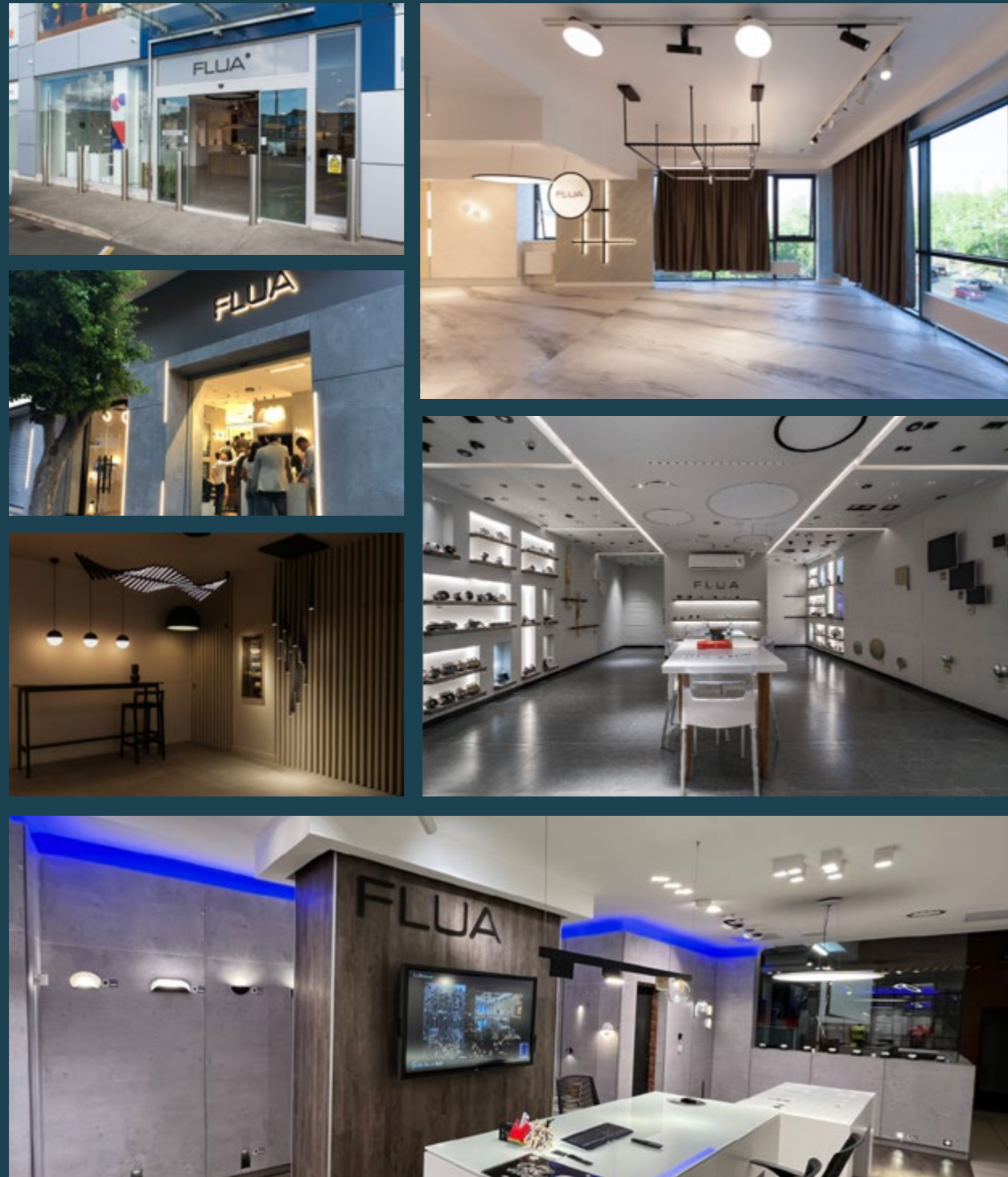


INTERNATIONAL SHOWROOM

The above data is up to 2023

CHINA SHOWROOM

The above data is up to 2023



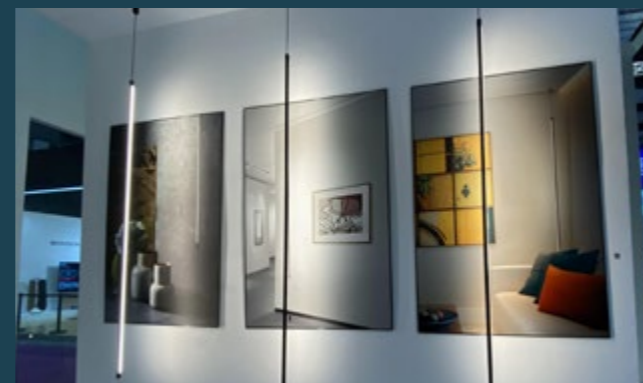
A PART
INTERNATIONAL SHOWROOM



A PART
CHINA SHOWROOM

BRAND ACTIVITY

FLUA has actively participated in lighting exhibitions around the world for a long time. These exhibitions serve as crucial platforms for us to showcase innovation, set trends, and connect with industry professionals. From the Frankfurt Lighting Fair to the Tunisian Lighting Expo, and from the Shanghai Lighting Exhibition to Guangzhou Design Week, FLUA has been dedicated to providing exceptional lighting solutions to our customers. These exhibitions represent FLUA's strong presence in the international lighting market and our unwavering commitment to progress.





LIGHTING PARTY INTERNATIONAL COOPERATION



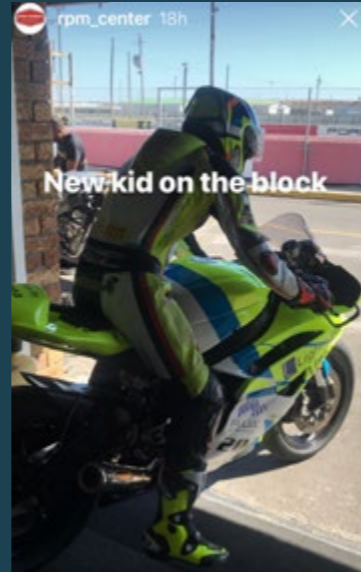
We believe that life is better and more enjoyable when there is light. Light is intimately connected to everyone.

Creates the environment in which we live and love. Light is art, light is fashion, light is life.

From November 2017, FLUA will hold LIGHTING PARTY every year. Partners, friends, designers, and architects from all over the world come to celebrate with us and share ideas and inspiration.

Sincerely thank you all for your continued support, FLUA always welcomes new ideas and ideas





17-28

RESIDENCE

29-32

HOTEL

33-42

OFFICE

43-52

RETAIL

53-60

RESTAURANT

61-62

MUSEUM

Team Lights Pro MX sponsor

Congratulations to Team Lights PRO MX become the national championship of Natal, Cape Town of South Africa.

FLUA is very happy and proud to be a sponsor for Team Lights Pro MX. We wish Team Lights Pro MX and make persistent efforts in the future!

ERZELIA VILLA

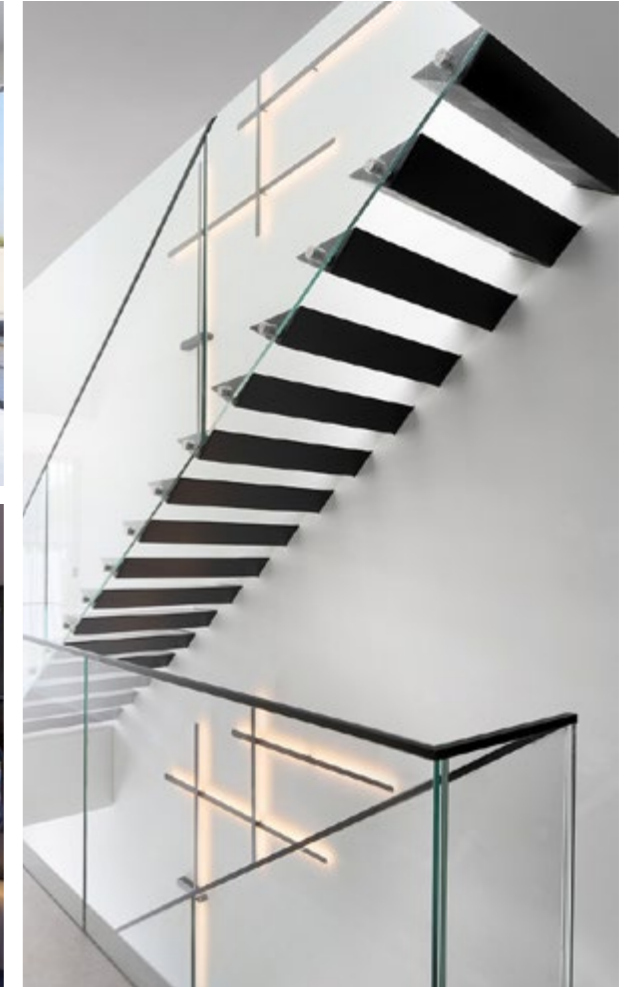
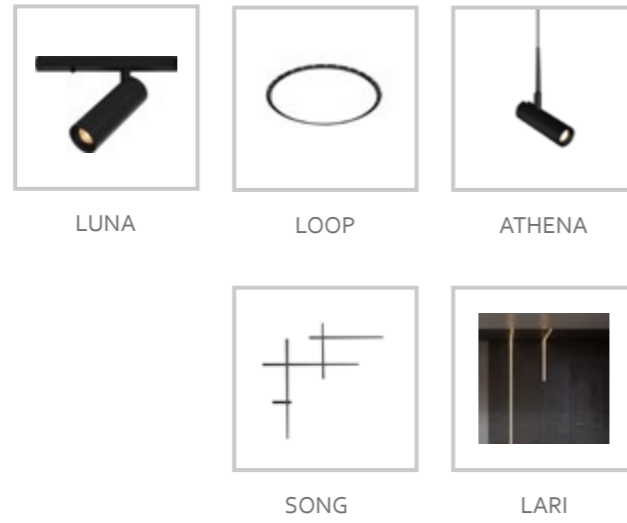
ISRAEL

FLUA would like to present you the project of private villa, so you can take your own ideas of decoration and lighting.

The purpose of the lighting designer has been to optimize the quality and functionality of the rooms. The right choice of lighting will bring a materiality to the spaces, restoring a sense of domestic warmth to the clean, modern environment.

For example, products from the SONG collection were used for the staircase, which thanks to its minimalist design, blends in perfectly with the environment.

All this, combined with a level of quality, guaranteed the total satisfaction of the client, who was assisted every step of the way in finding the best lighting solutions for their home.





VILLA 26 LYNWOOD

NEW ZEALAND

The huge french window is the best part of this villa. Yet it's also a big challenge to the designer to seek a harmony between the outside nature and the inside art work.

With the simplest interior finish and furnishing, the villa space infinitely extend to the stunning nature.

Designer cleverly plans a non-master lamp lighting to perfectly match with natural light. VISOR combines with LUNA magnetic track system, results in a clean and neat ceiling and walls as well as an aesthetic, sharp, artistic, gentle and fragrant lighting atmosphere.



LUNA



METEOR



VISOR



KUBIK



ANTLIA



PENT HOUSE
MEXICO

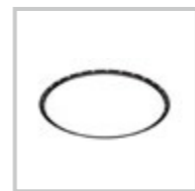
The way of point lighting enhances its sense of presence. The coffee table is illuminated by ring spotlights in the living room, and each painting The above is brightened with double-headed spotlights. Highlight the original texture and level of the painting, better reflect the art value.



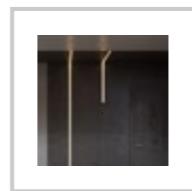
COMET



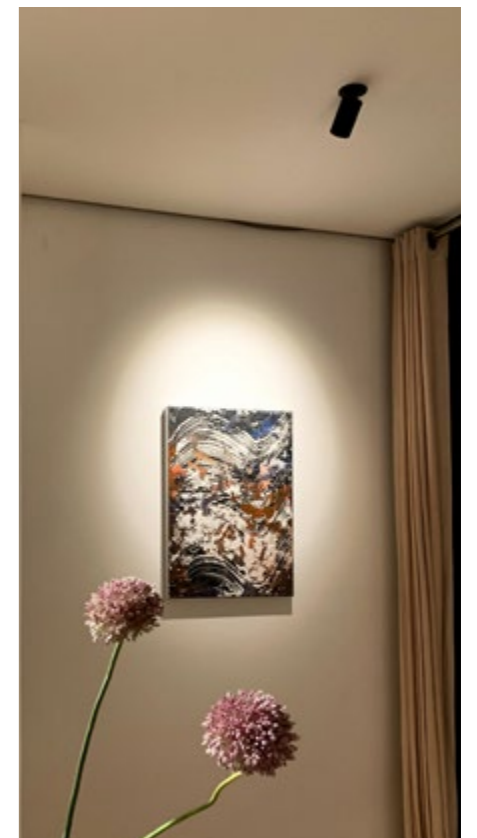
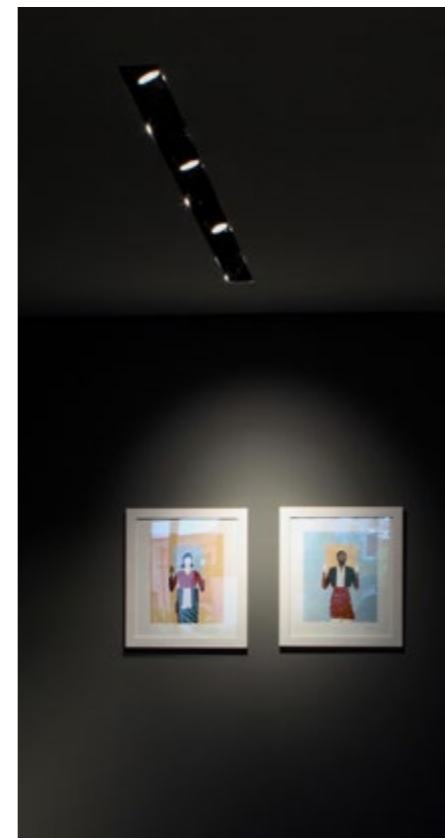
FAVOR



LOOP



LARI





CURES



WAVE



PALLAS

JIAYING INTERNATIONAL

SHANGHAI

Modern style apartment in China. Inspiration of minimalism.

FLUA is happy to introduce this beautiful modern style apartment in China. The project, completely designed with FLUA lamps, has become a great example of creativity and functionality.

While planning a large apartment, designer always thinks of empty space and the right proportions. FLUA products perfectly match with modern and compact style. For such projects, we recommend black colored lamps. Being elegant and stylish, these splendid creatures harmoniously blend into the environment, become considerable design elements.

WAVE vertical with its downwards light provides comfortable ambient light effect, perfectly match the living room with high ceiling.

PALLAS series' concept makes it possible to create unique patterns in the room, and visually enhance the space. Installed in a group, PALLAS can create amazing light effect, to focus and emphasize separate objects in the space.



STILETTO VILLA
SINGAPOR

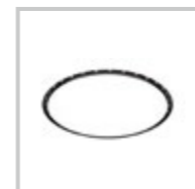
What should a designer's home look like? Log-style furniture, art paintings that can be seen everywhere, and various types of green plants, these elements are mixed and matched to create a unique effect, which is exactly what the owner of this project wants. Every area that the designer wants to highlight has been accentuated to reflect its presence. The coffee table is illuminated by circular spotlights in the living room, and double-headed spotlights are used to brighten each painting. Highlight the original texture and layers of the painting, and better reflect the artistic value.



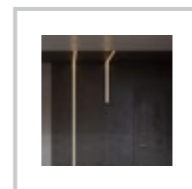
COMET



FAVOR

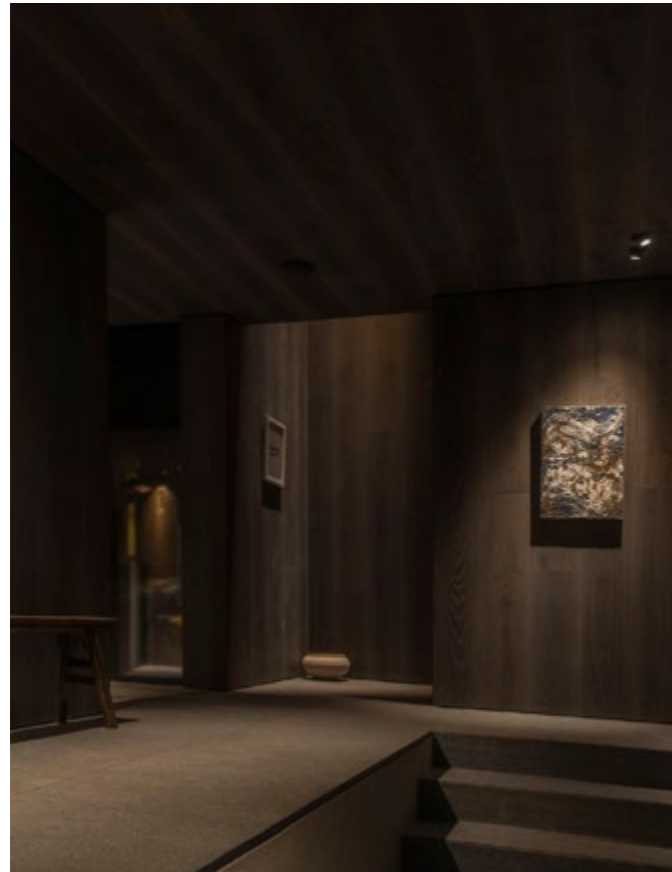


LOOP



LARI





HOUSE IN THE WOODS VILLA

MEXICO

This case shows us a private villa project. The project is located in Mexico. The villa is built on a hillside. The exterior is surrounded by an open courtyard and an excellent natural environment. The interior pattern is both transparent and independent. The original wood color makes the house "return to nature". Based on the owner's own familiarity with the product performance, application scenarios and effects of the lamps, the customized lighting design creates a warm, comfortable and safe living environment.



PEBUK



GLORY



FAVOR



AHRI



JINBEI PALACE TWO HOTEL
CAMBODIA

This hotel uses the color temperature of 3000K-4000K lamps for rooms on 3 basement floors and , 11 floors above the ground.The lower floors are the entertainment and leisure reception area, and upper floors are the guest room area.

Each space has both accent lighting,artistic lighting and basic lighting. The illumination in the reception area is relatively soft to increase the comfort.

The corridor space adopts a 0-10V dimming system, and the average illumination of the entertainment hall is relatively high, at 600LM-700LM, ensuring sufficient lighting for the entire lobby.



VESTA



LED STRIP

RIU HOTEL

DUBAI

RIU Hotels and Resorts Group was established in Spain in 1953 and now has more than 100 resorts in Europe, America and Africa. The most popular ones are Mauritius and Sri Lanka, Maldives, Cancun, Mexico and other 19 countries and regions.

There are more than 27,000 employees. Last year, its hotel received 4 million guests. Today, RIU is the 30th largest hotel chain in the world, one of the most important hotel chains in the Caribbean, and the third largest hotel chain in Spain.

Riu Dubai-All Inclusive is located on the waterfront of Dubai's Deira Islands, 7 km from the Grand Mosque. It features a restaurant, free private parking spaces, a fitness centre and a bar. It offers more than 750 rooms.



DEEP





CANADA GOOSE OFFICE HEADQUARTER SHANGHAI

The project is located on the former site of the Shanghai Acrobatic Troupe on Yan'an Middle Road. After an overall renovation, the park retains all the historical buildings, and now this area has become a gathering place for creative companies such as film, television and drama.

The space renovation hopes to give the space new life and a warm modern style on the basis of respecting for the existing buildings, which is in line with the overall brand image of the customer.

The lighting treatment reflects the texture of the old wall through minimal linear lighting, further highlighting the contrast between materials. The back light not only outlines the double-layer LOGO but also illuminating the traces remaining on the original building.



COLUMN



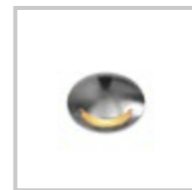
BOW



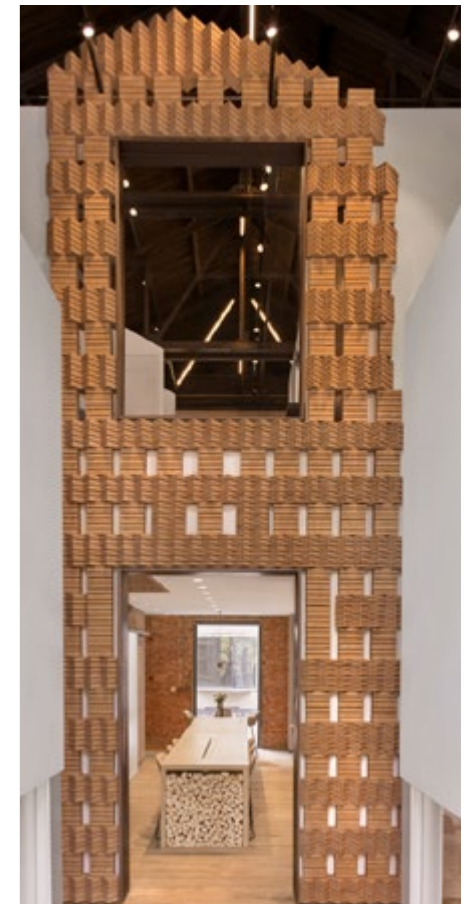
GLORY



VISOR



SURROUND





IAA LAW FIRM

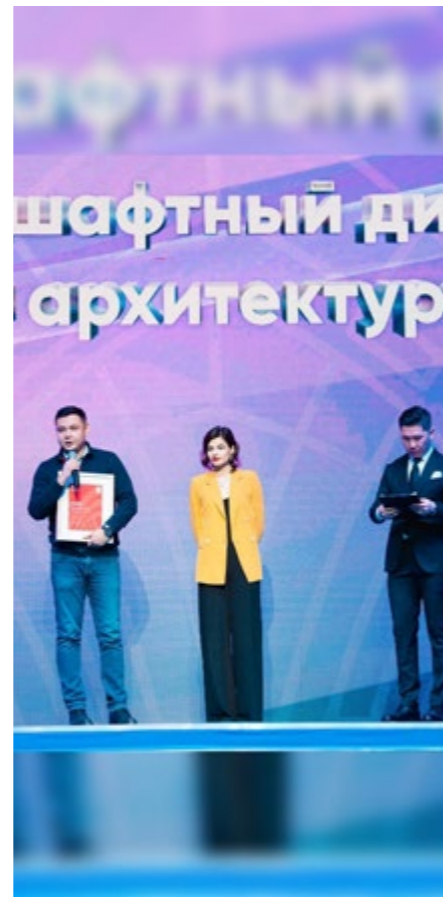
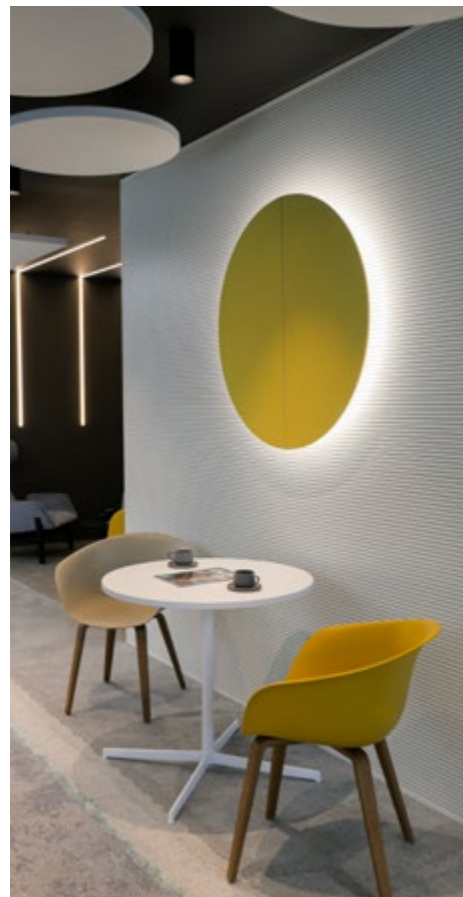
LEBANON

Founded in 1999 and after two decades of legal practice, IAA is now known as one of the leading law firms in Lebanon and the Middle East region for its innovative and direct approach to legal counseling, litigation and dispute resolution strategies.

Today, after more than two decades of legal practice and a much larger team, IAA has earned wide recognition for its commitment to the representation and support of its clients and its high-quality legal consultancy. IAA is determined to achieve global coverage by incorporating its areas of expertise and core values to successfully cover cross-border transactions on international levels.

We are dedicated to finding groundbreaking solutions to complex challenges. We aim at building trust and confidence in our clients who delegate to us their problems and challenges.



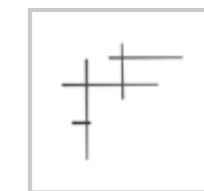


PROSPACE OFFICE (Best Office Project)
KAZAKHSTAN

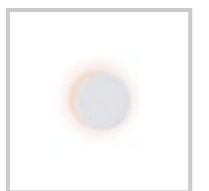
Designed by Auroom Interior, Pro Space Office was awarded by the Tanu Award as "The Best Realized Office Project". This office is located at the most stylish and super modern district in Nur Sultan. Origin from the concept of energy, dynamic time and eternity, designers successfully present the owner with an office that is comfortable, conducive to work, durable and vogue.

Neutral color scheme is dominating this 198 m² office. With slight accents in the form of yellow, and the perfect light and shadow created by well selected luminaires, the space becomes alive, vivid, exquisite, dynamic, artistic and full of energy.

Luminaires used in this project includes DOMO, SONG, LARI, PAPER, METEOR, KARINA, DANAS.



SONG



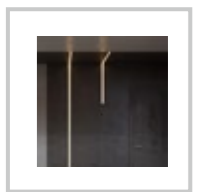
KARINA



DOMO



METEOR



LARI



TWISTLOCK

ISRAEL

An office performs a number of managerial functions such as planning, organization, direction, coordination, communication. And the biggest asset of all, people should be the center of an office design.

A good office design can help recruit, retain and inspire people, empower them to work with their full potential. And a reliable, efficient and easy-to-operate lighting is what complying with regulations, promoting wellbeing and productivity and offering visual comfort.

Linear lights are installed in the workspace to create the suitable light for every task. A long magnetic track system, LUNA, delights the space with perfect light and shadow as well as directing the walk flow, in the meantime spot on the company logo and wall decoration to make the public space more dynamic and vivid.

DOMO is applied to the guest area to create a comfortable meeting experience with great hospitality for visitors.



LUNA



DOMO



CALEDON WESTERN CAPE

SOUTH AFRICA

AB InBev is a Belgian multinational drink and brewing company. It is the world's largest brewer and considered one of the largest fast-moving consumer goods company. It has approximately 630 beer brands in 150 countries.

Architectural focus was clean lines within the barnlike pitch roof structure. All fittings are recessed to keep the that clean "look". The conference centre required uniform functional lighting, with the flexibility of control and separate circuits to cater for the varied applications that the space would be used for, from educational to entertainment.

The same clean line concept was applied in the entrance with the recessed ARMO system, but here uniformity was not the focus, and the ARMO enhanced the space from a functional and aesthetic point of few.

The I-beams structure externally was light up with Buried up lights, MAX M, which highlights them as architectural features and provides enough ambient lighting for the entrance of the building.

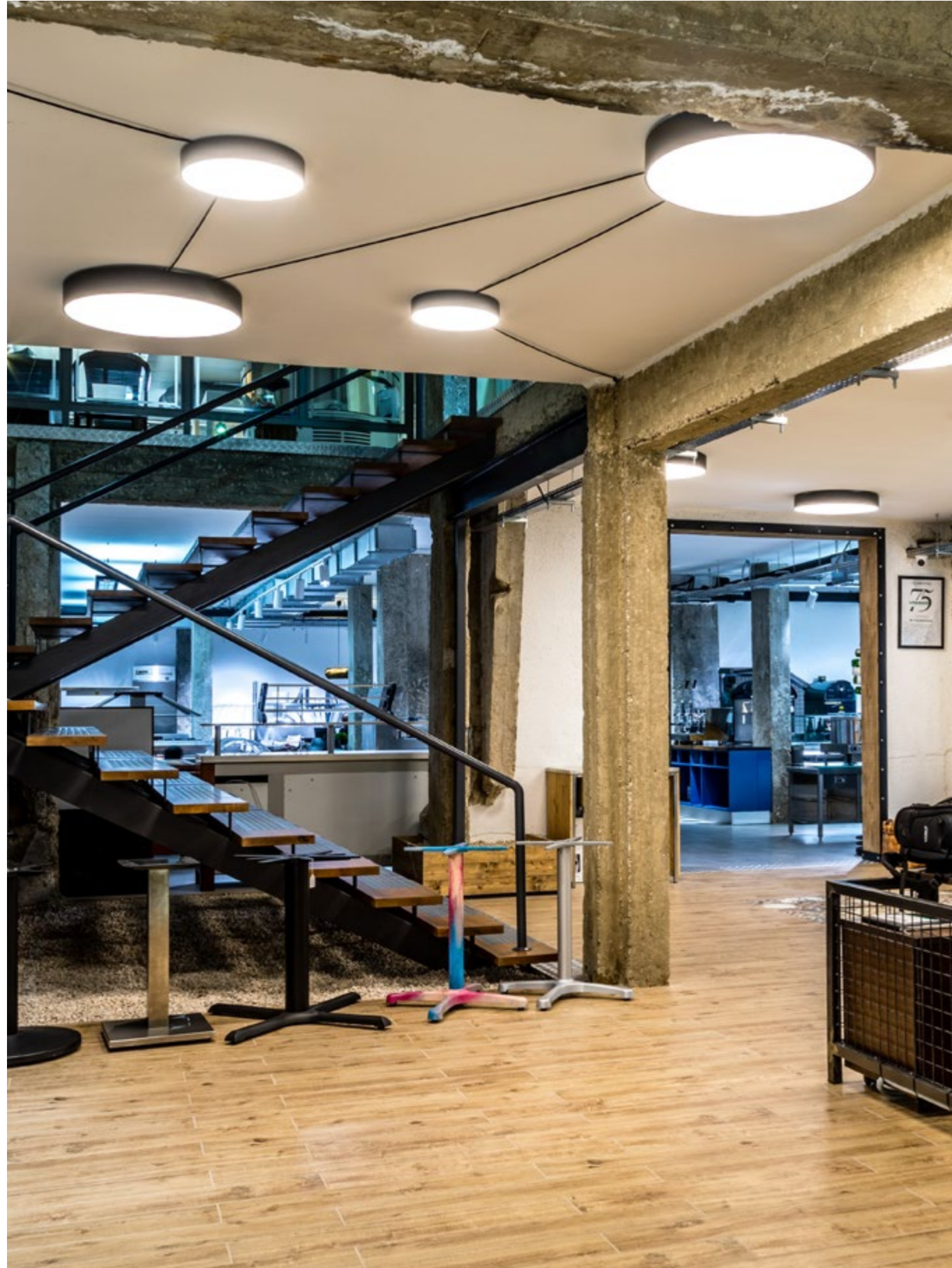


VISOR



ARMO





VRESSO SHOWROOM LEBANON

Limited collection showroom in Lebanon is a unique place, where the best examples of most advanced design solutions are combined together. Elegant, stylish and luxury are the key words to describe this space. It was a big challenge for the designer to create the best lighting solution to this project.

FAVOR series was chosen specially to create the best accents for the exposition. This miniature accent fitting with its rotatable function could give the best lighting effect to the showroom, focusing strictly on the objects, underlining all beautiful slight detail. LUNA magnetic track system was another great choice for the showroom.

Thanks to its magnetic installation function, LUNA gives thousands of choices for the designers, creating different lighting pattern according to the project requirement.



DOMO



LUNA



GRID



LEBANESE BRUTUS COLLECTION GALLERY

LEBANON

Limited collection showroom in the center of Beirut is the best selection of different products for home application.

LUNA S with magnetically installed luminaires is the great choice for the project. Thanks to the construction, lamps can be easily removed and installed in any place of the track. The lighting can be easily changed once required.



FAVOR



LUNA



HUAWEI STORE SHANGHAI

High-quality ambient lighting can not only make the store look beautiful, but also make customers feel comfortable and happy, thereby enhancing customers' desire to buy.

500~1000 Lux, 3000~5000K color temperature lamps lights up a space with comfortable atmosphere for customer to walk in, at the same time, provides most suitable light to present the mobile phone attractiveness.

Lighting is a tool to promote emotional communication between staff and customer, it is also the original intention and essential requirement of the design.



KUBIK





OFFLINE CONCEPT FLAGSHIP STORE

BEIJING

Giving products eternal life and value is the core philosophy of MUSEE Concept Shop, located in Beijing Fang Park, Qianmen, Beijing. MUSEE provides an open platform for products, breaking the boundaries of time and space, and delivering the brand concept that fine products are not limited by time.

In the open sales space, there are a number of ground tracks, and the counter with stainless steel wheels can move freely on the path of the tracks to realize the switch of more functional space and scene, and meet the needs of different activities such as daily sales, tasting and sharing, static show, fashion lecture and so on.

The specially customized LUCA buckle track light above the counter connects the whole sales area, and the continuous light reflects the coherence and the sense of The Times of the new circulation. The spotlights, chandeliers and supplementary lights with different functions on the track can be flexibly adjusted with the different positions of the counter.



LUCA



HOLILAND BAKERY

BEIJING

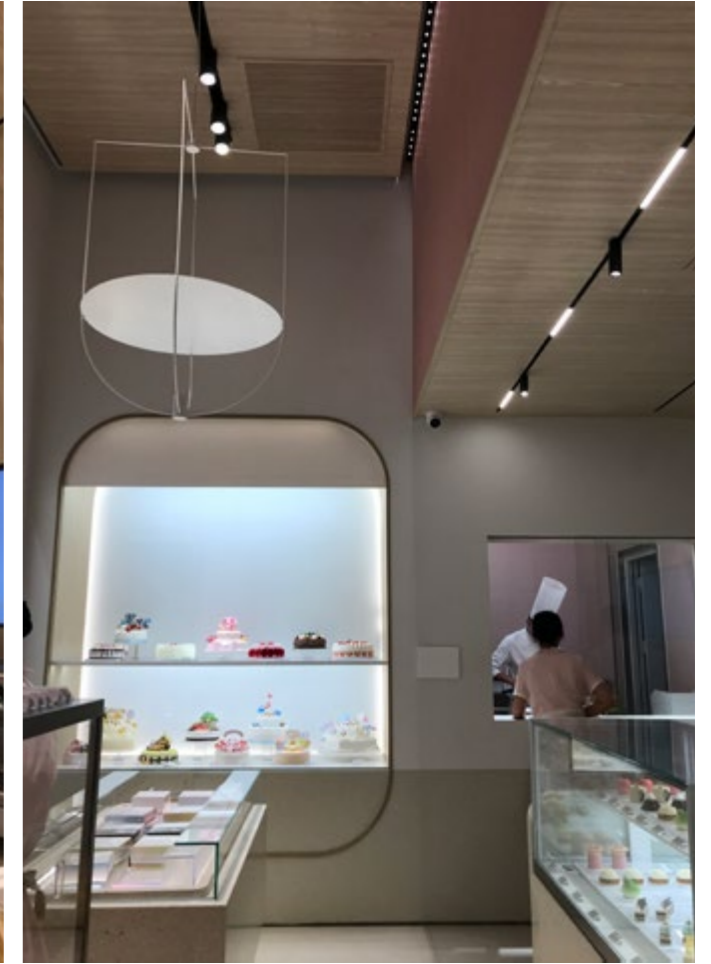
Team Lights Pro MX Holiland Theme Store adopts a large area of light and pink color in design and a large area of glass display to create a sense of warm, meanwhile reduce the visual fatigue brought by blocks.

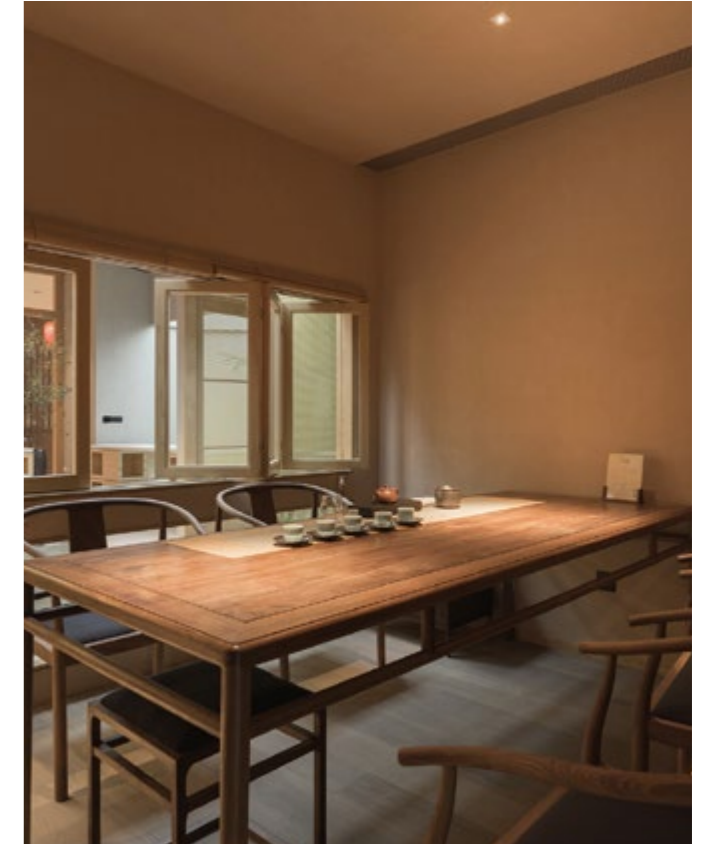
The table and chair configuration in the store also uses pink with warm-colored lights, making people easily relax when entering the shop.

Holiland attaches great importance to the design of the store. Through the LUCA track system, a series of cakes with strong ornamental, exquisite and seductive series, the bread and desserts are presented one by one, providing consumers with an immersive experience.



LUCA





APROPOS TEA HOUSE

SHANGHAI

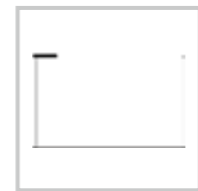
The tea house is located in Baoshan District, Shanghai. It takes the good Chinese saying of "事事合柿" (means "All with the best wishes") to name it. Every private room has its own characteristics, can satisfy at least one person and 10 people at most. With the sense of lighting and layering, it creates a quiet atmosphere in the noisy city life.



ARCA



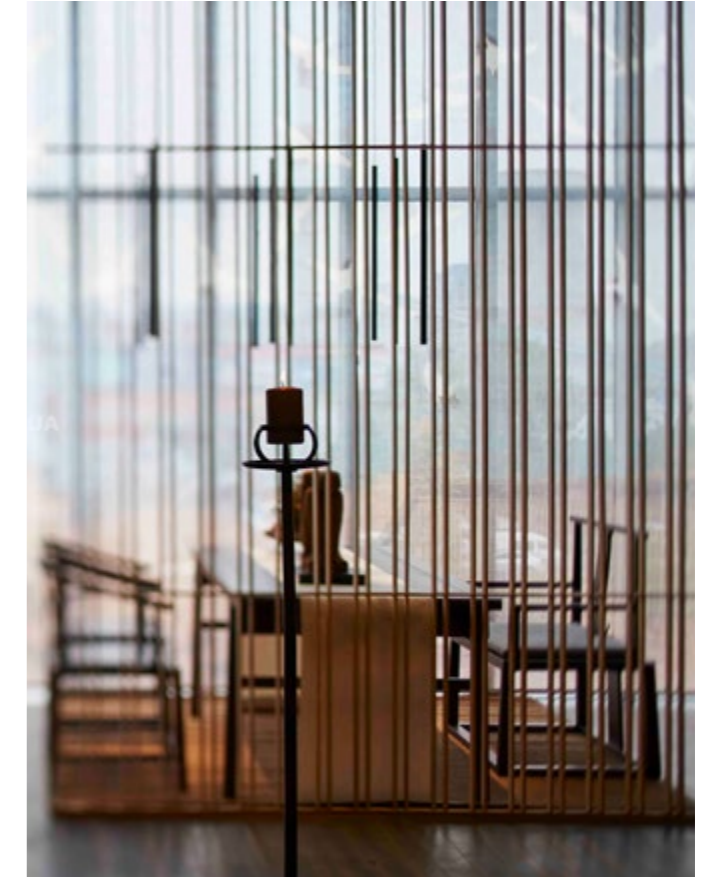
COMET



FLASH



LED STRIP



GUANXIN TEA HOUSE

SHANGHAI

Guanxin Tea House reflects an attitude which can be perceived and experienced, attracts the customers to explore more possibilities of space.

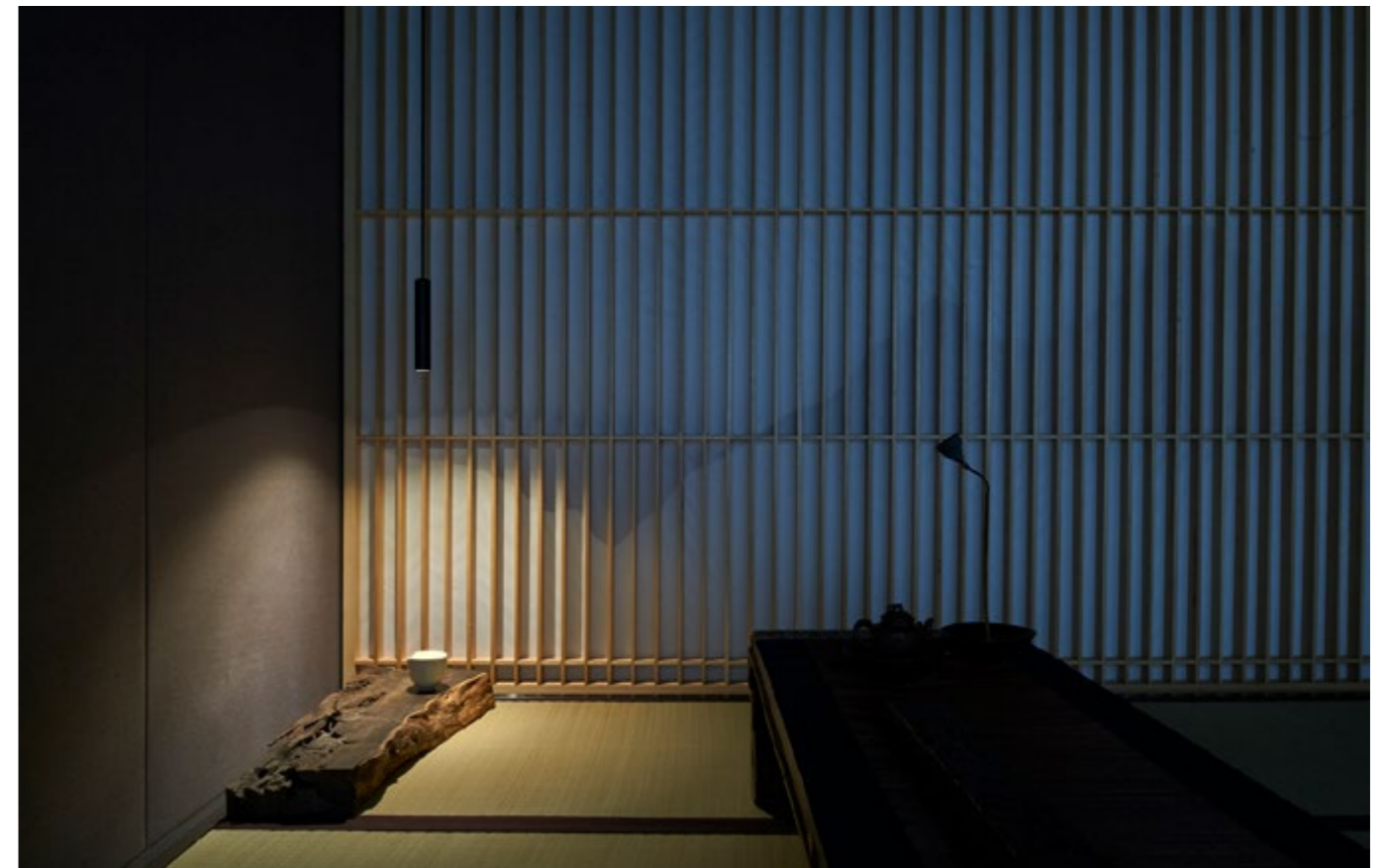
The well-designed scenic windows and screens form the echo and flow of space. Through the clever sight guidance of the FLUA GLORY and FORMULIA lamp series, the space landscape is finally fused with the whole picture, and the indoor and outdoor space corresponds to each other.



FORMULIA



GLORY





CHEF LUO HOUSE

WUHAN

CHEF LUO HOUSE is located in Jiqing Street at the intersection of Dazhi Road and Jiangnan Road in Hankou. The small two and a half story western-style has a low-key but splendid appearance, revealing a mysterious sense of luxury.

The entrance of the restaurant on the first floor is the welcome area. The entire space only uses two spotlights to light up the sofa which highlighted with a lonely atmosphere in the space. The floating ladder on the wall implies an attitude of continuous exploration, experimentation, and diligence.

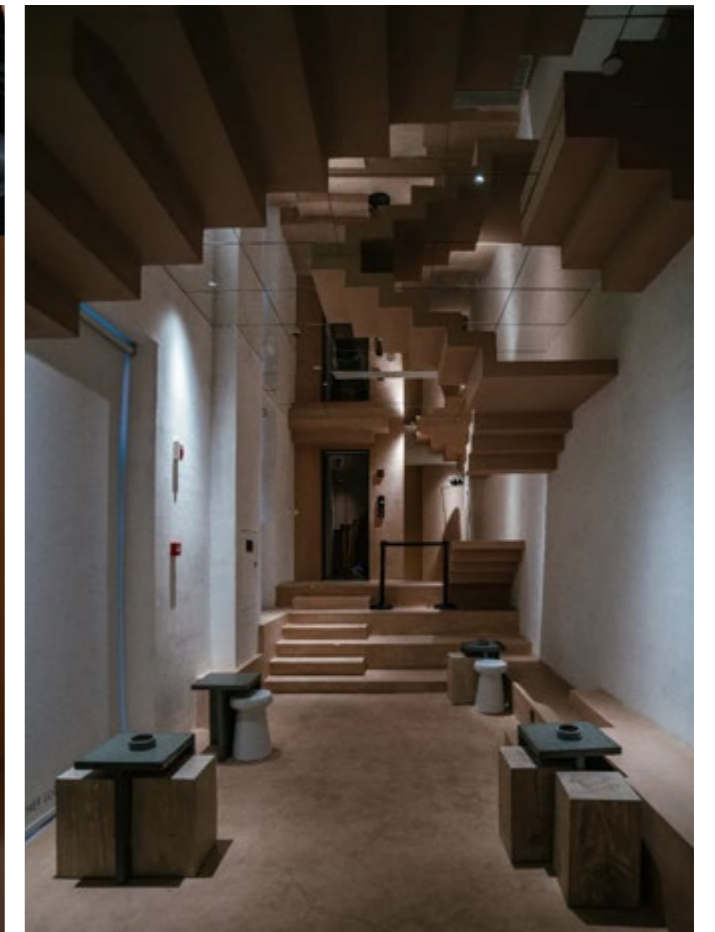
On the second floor of the restaurant, Focusing on creating a light and shadow effect between different spaces, The FLASH linear chandelier directly shines on the wall to avoid glare when looking directly at the lamp body. The ultra-thin cabinet ceiling lamp is used to brighten the niche, and the step light is just right and slightly lighting to the direction of the restaurant.



FOCUS



FLASH



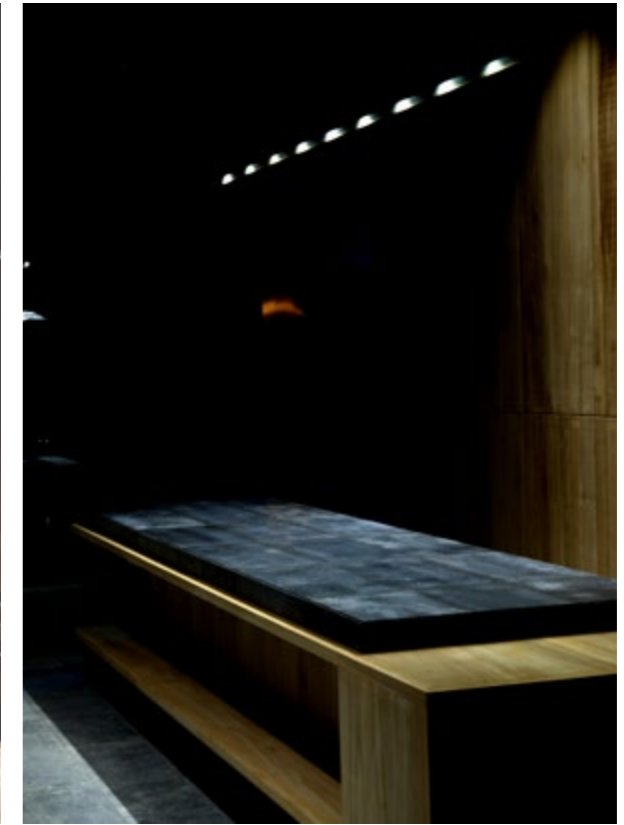
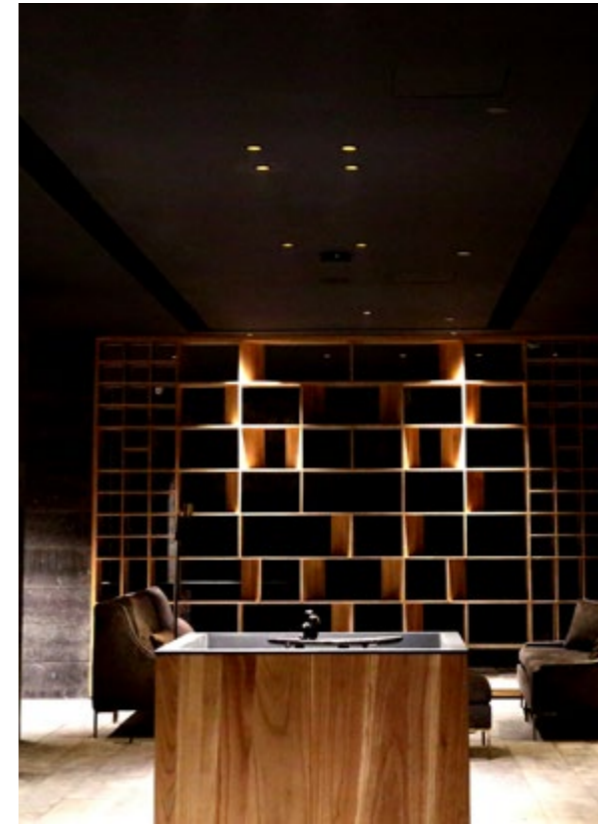
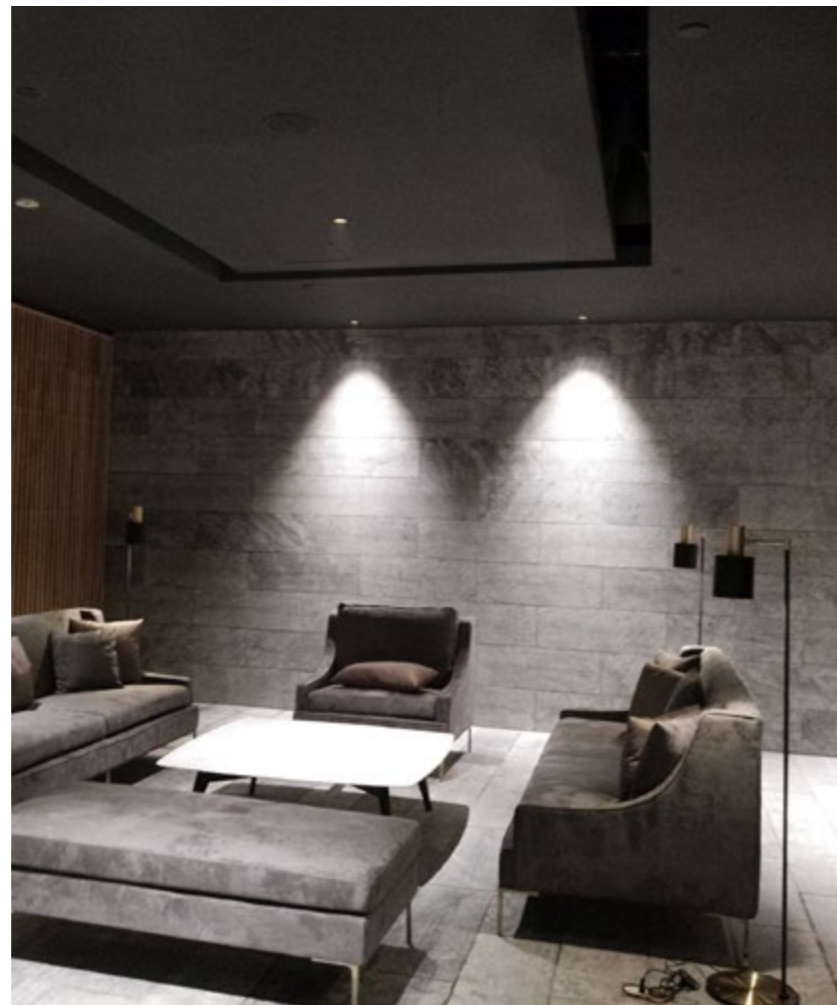
INGOT RESTAURANT

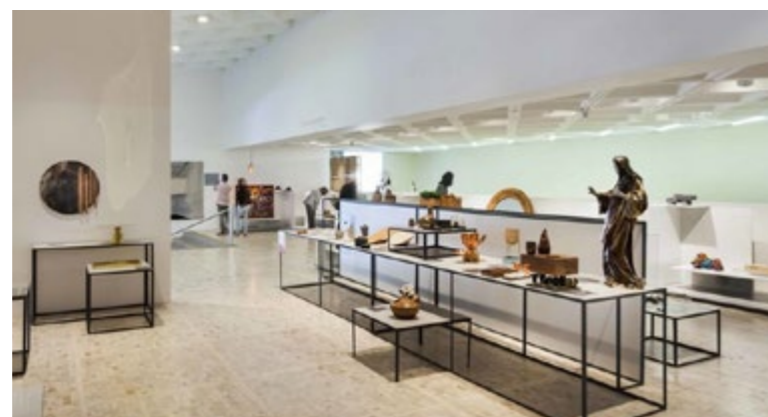
The restaurant and bar are specially designed into the interaction of light and shadow. This space combination creates an intimate atmosphere for the room, helping to highlight separate objects while hiding other objects.

FLUA adopted a wide range of lamp series. One of the leading product series is FOCUS, using a deep lighting spot structure and special optical lens to achieve perfect optical properties of the wide and narrow beam applications. FOCUS allowed to adjust the the illumination angles to highlight the objects from different directions.



FOCUS





TIENDA TAMAYO ART SHOP

MEXICO

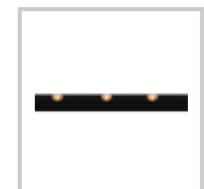
The store is located in the municipality of Zapopan, city of Guadalajara Jalisco, Mexico. The 120 m² project is an extension of the Rufino Tamayo Museum mission in Mexico City which has become a benchmark for Mexican design products, jewelry, clothing and furniture for those visiting the museum. It also offers a wide selection of its own publications, as well as books, journals and magazines issued by national and international publishing houses featuring the latest proposals in the production and exhibition of contemporary art and design.

The project is developed in a contained space in a polygon that opens and closes its facade by means of vertical elements composed of mobile wooden panels that rotate on their own axis, thus allowing for cross circulation.

ARMO, GRID, FAVOR, LUNA Magnetic Track System are installed to create the perfect light and shadow to enhance the interior space and architecture shape, present an exquisite and artistic atmosphere for visitors, in the meantime, make the collections more luxury, fancy and aesthetic.



LUNA



LOCUS



GRID



YUAGUO PAGODA

Changchun

Youguo Pagoda is located in Southeast of Changchun Wanshou Temple. It is built at a height up to 65 meters, covering an area of 7850 m² and total floor area of 6200 m².

This pagoda style, hexagonal eaves with 7 floors, dates back to Liao Dynasty. Total 9999 gilded Buddha statues and a Guanyin with an ebony aquaria are enshrining and worshipping in the pagoda.

It's the continuation of history, sacred belief of popular, symbol of culture, holy and pure. Designers use invisible linear lights to embellish the outline to create the solemn and glory atmosphere, while the FAVOR downlights provide accent lighting for the Buddha statues to enhance the depth and create an immersive experience for the believers to feel the guidance, care and love from Buddha.



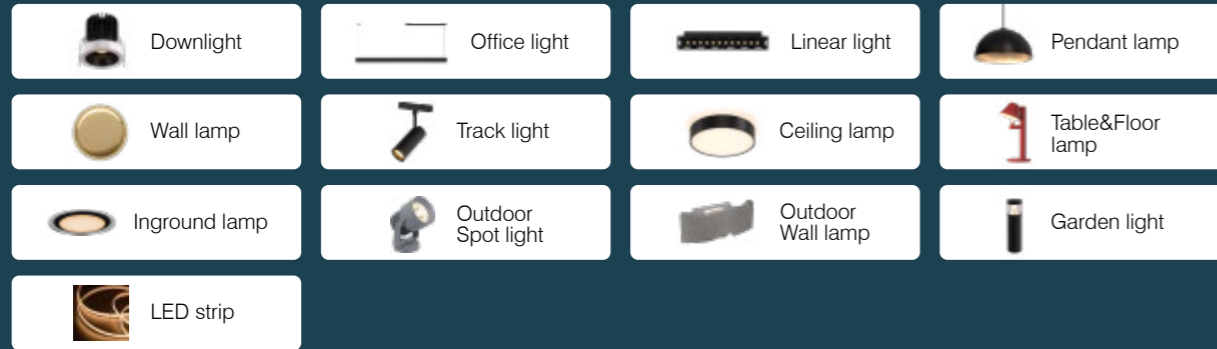
FAVOR



SMART LIGHTING

Add AI brain to lamps to realize smart experience

Lighting comes with smart chip



Function



Color temperature adjustable

Switch between warm and cold color temperature according to the space, so the user can have the most comfortable lighting.



Brightness adjustment

Adjusts brightness combinations as user activity changes, helping to improve work and study efficiency



Timed switching

Plan your lighting experience in advance to save your mind and energy, and customise your life to be comfortable at all times



Countdown switch

No need to get up to control the lights

Multiple control methods



Smart control at your fingertips

FLUA provides professional lighting APP, including lighting settings, lighting scenes, automation, one-touch execution and other functions

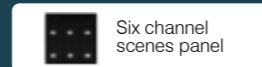


App download

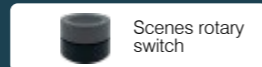


Smart switch

The light comes with its own chip, no need to buy additional control system, easy to link fixed/mobile switches, built-in Zigbee module, stable signal, can be used even without network



Six channel scenes panel



Scenes rotary switch



Smart Wireless Button Scene Switch



Voice instruction

The lamp can be controlled by voice speakers and mobile phones



Smart speaker



Smart voice controller wall switch



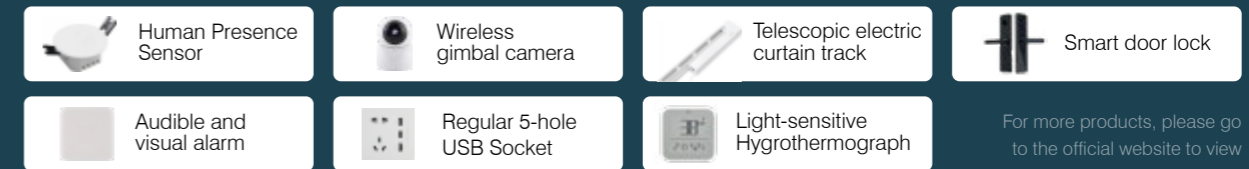
Multi-function central control panel

Desktop speakers: Xiao Zhi Guan Jia, Baidu Xiao Du, Xiaomi Xiao Ai, Tencent Cloud Xiao Wei, JD Ding Dong, Tencent Cloud Ding Dang, Amazon Alexa, Google Assistant, Yandex Alice, Giga Genie, SmarThings, Homekit, etc.

SMART HOME

Smartly Illuminating the Future, Embracing Whole-Home Intelligence

Wireless intelligence can be connected to conventional electrical equipments, including lights, televisions, audio equipment, air conditioner, floor heating equipment, sunshade equipment, security cameras, entrance equipment, security alert etc, to meet both smart home and commercial needs. The gateway module like a "translator" when connecting with different protocols



For more products, please go to the official website to view



Stable connection



Group sharing



Diverse moduels



Scenes setting

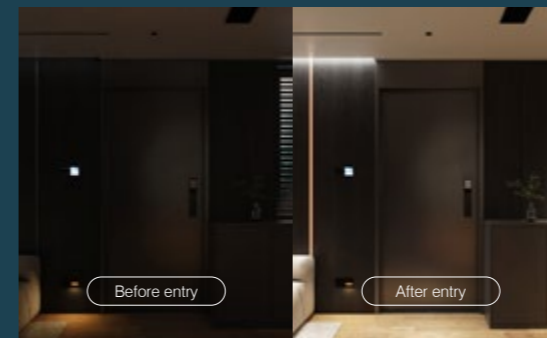


Energy efficient

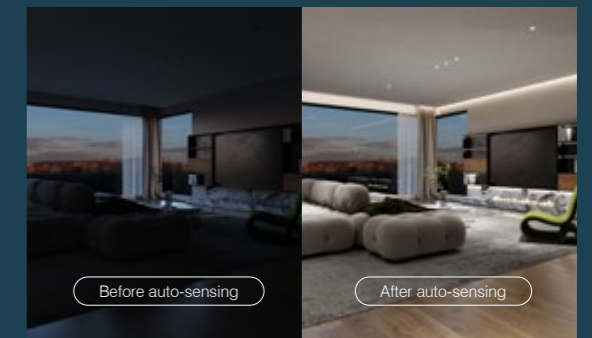


Remote control setting

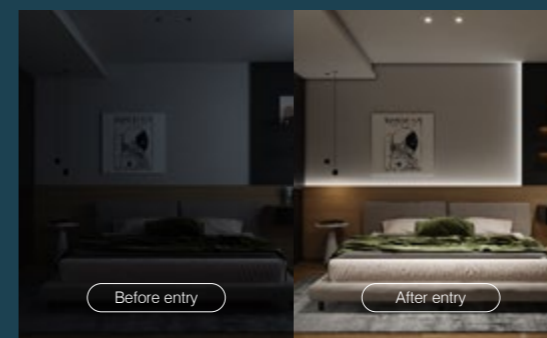
Multiple lighting groups are carefully designed in advance, one key to automatically execute the lighting scene for you to achieve simple, clear, intelligent all-round scene automation.



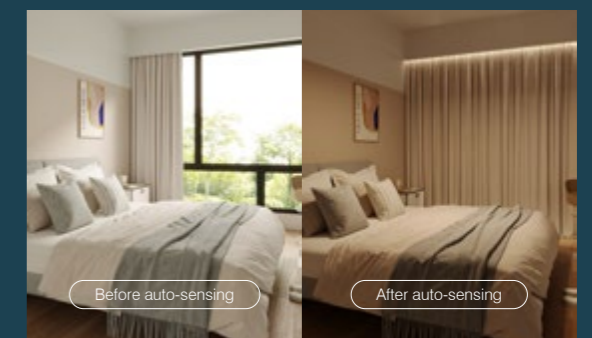
When returning home, the **smart door lock** Automatic triggering of whole house lighting.



When house lighting illumination less than 10lux, the **Light-sensitive Hygrothermograph** meter automatically turn on the living room



When entering the room, the **Human Presence Sensor** receives the signal and automatically turn on the bedroom lights.



When the light is <10lux in the evening, the **Light-sensitive Hygrothermograph** and **humidity sensor** will receive a curtain closing signal with the smart curtain track and the lights will slowly turn on.

FLUA®

CATEGORY



DOWNLIGHT

With over a decade of technical expertise in downlight categories, we have created a variety of core products centered around architecture, catering to scenes like villas, hotels, museums, and clubs. Our design philosophy revolves around professionalism, meticulousness, and simplicity, emphasizing nature, anti-glare, and high versatility, which has gained recognition in the market.



COMET

The COMET series is synonymous with ultimate perfection, featuring minimal light emission holes combined with seamlessly integrated lamp bodies, making it a true example of light without visible fixtures. Its excellent light distribution design allows it to shine brightly in both residential focal lighting and museum settings.



FOCUS

The FOCUS series offers a versatile replacement lighting solution with a sleek design, CCT, IP54 rating, and anti-glare technology. Its slim profile and interchangeable aluminum covers, available in various colors, seamlessly blend into different spaces, making it perfect for upscale villas, hotels, and clubs. It also supports smart control via a mobile app for seamless integration with other devices.



SCOPO

The SCOPO series uses a modular design with versatile accessories for adjustable light modes. It shifts from single to multi-head lamps, offering a seamless solution for replacements and application debugging.



OFFICE LIGHT

The office lighting category encompasses suspended luminaires, movable desk lamps, and high-end floor-standing office lighting. These are designed for indoor office areas, commercial spaces, and industrial settings. They utilize professional light distribution and high-standard photoelectric solutions to meet the experiential demands of high-end clientele.



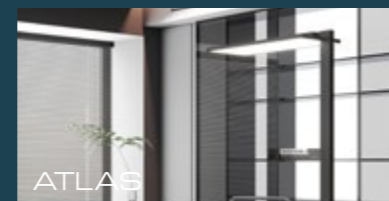
RIGA

The RIGA series showcases ultra-slim suspended grid lights, combining simplicity with advanced optical design. Hidden light sources, efficient lenses, and anti-glare hoods create UGR < 10 for comfort. Versatile controls (gesture, segmented, DALI, 0/1-10V) ensure seamless integration.



PALLA

The PALLA series offers movable office desk lamps with a sleek and refined design philosophy. The wireless charging base keeps mobile devices at their peak performance. Equipped with Grade A components and seamless dimming functionality, its multi-axis rotation structure brings it closer to the user's environment.



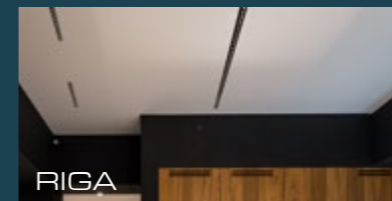
ATLAS

The ATLAS series embodies premium office floor lighting, influenced by stylish Italian design. Its tall, minimalist approach features a large, even desktop illumination. It banishes glare and shadows, fostering desk inspiration. Aesthetic excellence and artisanal craft converge for upscale lighting solutions.



LINEAR LIGHT

The linear lighting category includes the RIGA ultra-narrow grid series, RADIAL flexible straight line series, XX free extension system, etc. "Light as a line, light as a guide" is a mature and convenient installation method. The ability to seamlessly connect in long continuous stretches gives rise to countless creative forms. It not only meets the daily requirements for lighting but also embodies the essence of simplicity and refinement in the present.



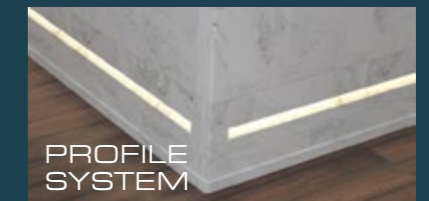
RIGA

Linear lamp categories include Riga's narrow grille series, RADIAL flexible linear series, XX free extension system, etc., "with lines as light, light led roads" mature and convenient installation methods, and countless continuous stitching countless creative styles, which is in line with both in line with The daily requirements for lights.



RADIAL

The RADIAL series of linear lights transform the line between two points into light, without being restricted by the site, they can be fixed to any wall. They traverse and interweave freely within a space, presenting a new form of lighting through the purest design.



PROFILE SYSTEM

The XX free extension profile system boasts convenient installation and optical modules, along with continuous ultra-long splicing capabilities. This integration of architectural lighting and decorative design makes it an essential interior style element.



TRACK SYSTEM

The track system includes the LUNA magnetic attachment system, LUCA clip system, and ULTRA intelligent system, offering 9mm, 12mm, and surface-mounted options. Within limited space, these systems offer limitless possibilities. By combining points, lines, and surfaces, they allow for unique, creative, and practical lighting environments to be designed according to actual settings.



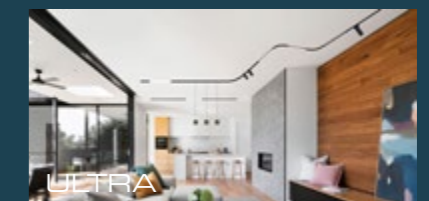
LUNA

The LUNA series employs a magnetic attachment system, adding futuristic elements. Light modules attach to the track without physical connections, showcasing strength. Strong magnetic effect simplifies space lighting design. Spotlights, floodlights, and grid lights offer flexible 24V PWM full-range dimming, infusing dynamic vitality into objects and spaces.



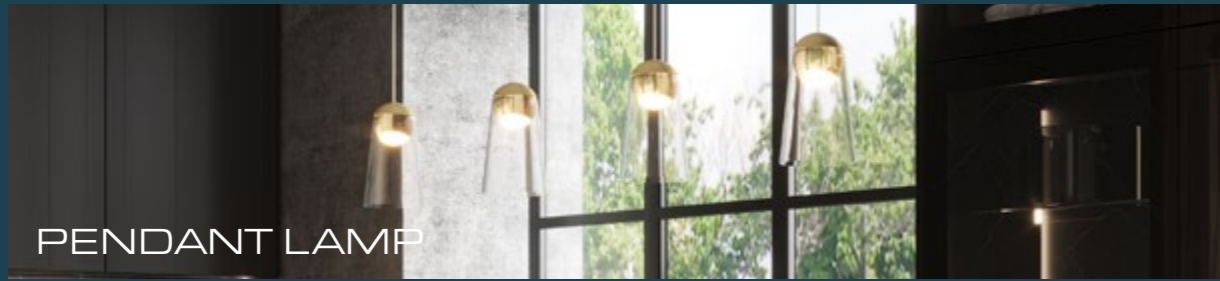
LUCA

The LUCA series offers clip system, options for recessed, surface, and suspended installation. It includes super-narrow LUCA XS, super-thin LUCA SS models. Supports modules like spotlights, floodlights, grid lights, pendant lights, 2W to 100W power range. Supports 24V PWM full-range dimming (S) and DALI individual lamp dimming, color control (M). Preferred for hotels, clubs, entertainment, exhibitions.



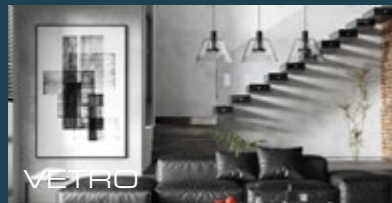
ULTRA

The ULTRA series features an intelligent system with options for recessed, surface, and suspended installation. It combines linear, curved, and hexagonal axis configurations, creating a super track system. The light module selection is the most extensive to date. With a profile height of just 17mm, it offers DALI/WIFI+BLE/ZIGBEE CCT single-lamp control functionality, covering all indoor areas that require lighting.



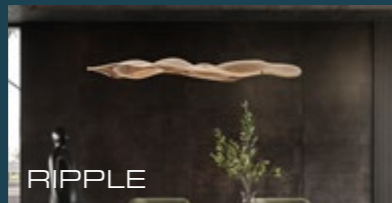
PENDANT LAMP

The Pendant lamp category includes classic singles, decorative flower lamps, and large DIY combo pendants. Designed by a 20-year-experienced Italian team, they closely track global trends, seamlessly blending "architecture, interior design, and lighting." Their meticulous design continually refines the product system, yielding unique pieces.



VETRO

The VETRO series offers pendant lamps that combine the aesthetics of light and shadow. Italian design merges vintage tones with modern elements, creating an elegant suspension of light in the air. The glass lampshade provides both upward and downward illumination, catering to different lighting needs in various scenarios.



RIPPLE

The RIPPLE series delivers ambient lighting with a play of light and shadow, interpreting the shimmering ripples in the air. RGB and warm white LEDs, combined with an intelligent control system, create exceptional beauty in any setting. The diverse and dynamic light changes bring a unique brilliance to the quiet night.



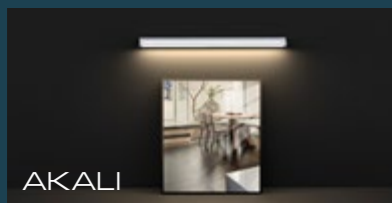
ARTE

The ARTE series features large DIY combination pendant lamps. The ultimate simplicity of lines forms "frames beyond the frame, spaces within the space." This novel design philosophy extends infinitely along the XYZ axis, integrating artistic design into interior decoration, breaking free from conventional shapes, and exploring limitless possibilities.



WALL LAMP

The Wall lamp category covers mirror front lights, bedside lamps, decorative options, and DIY combo styles. Designed by a skilled Italian team with 20+ years' experience, they stay updated with global trends, blending "architecture, interior design, and lighting" to create unique products. Meticulous design principles refine the product system, yielding distinct results.



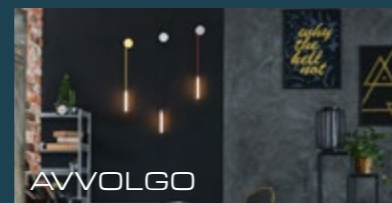
AKALI

The AKALI mirror front wall lamp series features practical and functional design. The light is soft and comfortable, with an IP54 waterproof rating. It can be placed on top of bathroom (dry area) mirrors or on the sides of mirrors in walk-in closets. The swiveling illuminating body is more in line with usage needs.



MAYA

The MAYA series offers panel lights with high load-bearing aluminum construction, combining lighting and decorative applications in an integrated design. The concept of "architecture, interior design, and lighting" is perfectly integrated into the product. With a 220V input, it offers options for smart control or infrared sensor hand-sweep versions based on the environment.



AVVOLGO

The AVVOLGO wall-mounted smart lighting exemplifies the fusion of inspiration across different product categories. The AVVOLGO wall-mounted pendant light features an integrated bottom box that solves the issue of long hanging light cords. The coiled design can extend the cord length to 2 meters, allowing for various combinations and arrangements to become the centerpiece of any space.



CEILING LIGHT

The Ceiling lamp category revolves around comfort and atmosphere, where the soft light resembles the love of parents for their children—gentle and warm.



DOMO

The DOMO series ceiling light features a wide-angle light distribution design that casts light into every corner. It offers multiple installation options to adapt to various environments, and the updated smart control version provides even more choices.



PAPER

The PAPER series ceiling light boasts an ultra-thin suspended design, offering greater possibilities for space design. When paired with the smart control version, it allows for smooth dimming and color adjustment, enabling seamless and natural transitions between different lighting states.



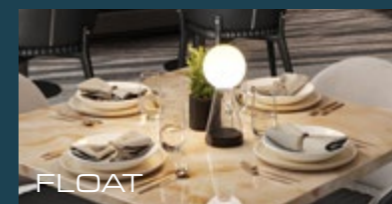
BUBBLES

The BUBBLES series features an Italian-inspired natural eco-design, personally crafted by Italian designers. It mimics the imminent dropping of water droplets in the natural world. To achieve this effect, it showcases a perfect curve between convex and concave surfaces. The external shape presents a fluid, organic form, making it a favored choice among designers.



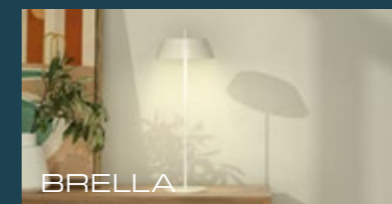
TABLE & FLOOR LAMP

The Table & Floor lamp category is born from the expertise of an Italian design team with over 20 years of experience. This exceptional team closely follows international trends, continuously innovating and seamlessly integrating the concepts of "architecture, interior design, and lighting" into their products. Their meticulous design philosophy continually refines the product range, resulting in highly distinctive offerings.



FLOAT

The FLOAT series features a remarkable design combining two different materials and forms of glass. The combination of suspended frosted glass and transparent glass creates an illusion of the globe floating, delivering both aesthetics and a focus on soft and comfortable lighting. With lithium battery wireless charging functionality, IP54 waterproof rating, and portability, it's adaptable to a wide range of indoor and outdoor settings.



BRELLA

The BRELLA outdoor lighting series embodies "more than meets the eye." With a 6000mAh battery, it's a table and pendant lamp. Add-ons turn it into a camping light. IP54 waterproof, SOS mode, 8+ hours at full brightness for a great outdoor experience.



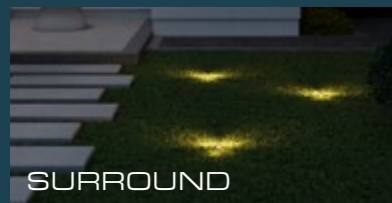
STAND

The STAND series, an Italian-designed floor lamp collection, showcases a pure and clean exterior design. The conceptual design considers the possibility of adjusting vertical lighting by rotating the lamp tube from left to right. The Y-tube design allows it to naturally stand within a space, creating suitable atmospheres in home living areas, lobbies, and representative zones.



INGROUND LAMP

The ground-recessed lamp series integrates innovative design and diverse functionality, seamlessly blending illumination with the environment, to create unique artistic lighting effects for architecture and landscapes.



SURROUND

The SURROUND landmark guidance ground-recessed lamp series positions an array of starry lights along pathways, embodying reliability and durability as its robust attributes. Its timeless design is potent enough to withstand the test of time, possibly enduring for centuries.



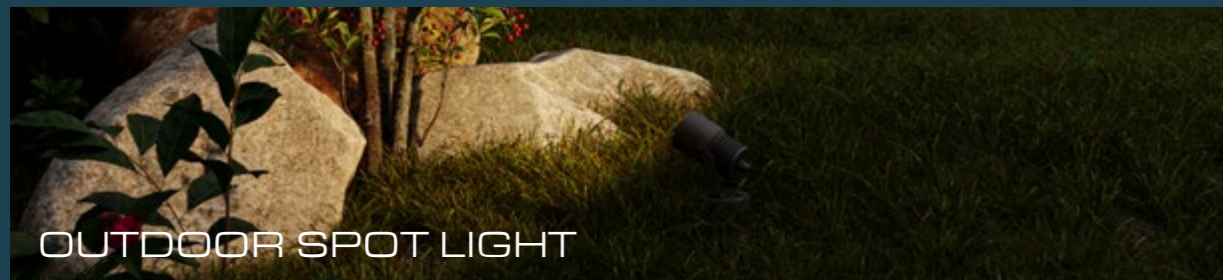
MAX

The MAX ground-recessed lamp series is purpose-built for lighting design, offering a wealth of parameter choices. Its special structural design enables multi-angle rotation and swinging, supporting powerful lighting applications. This series has become a favorite among designers due to its versatility.



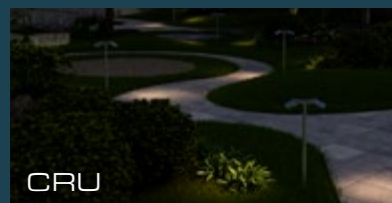
VELA

The VELA ground-recessed lamp series is an all-around performer, offering an extensive range of configurations. It covers wattage options from 2 to 25 watts, polarization choices, and beam angles from 5 to 38 degrees. Its stable quality assurance contributes to enhancing outdoor illumination.



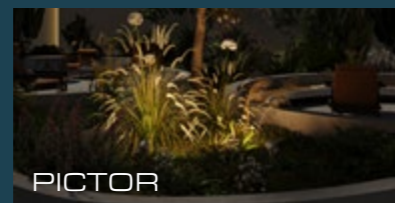
OUTDOOR SPOT LIGHT

The outdoor spotlight category from FLUA encapsulates the brand's philosophy of meticulousness and simplicity in design, emphasizing nature, glare control, and high versatility. Its consistent quality has earned recognition in the market.



CRU

The CRU outdoor spotlight series boasts a delicate and compact exterior design, creating a myriad of star-like points in garden settings.



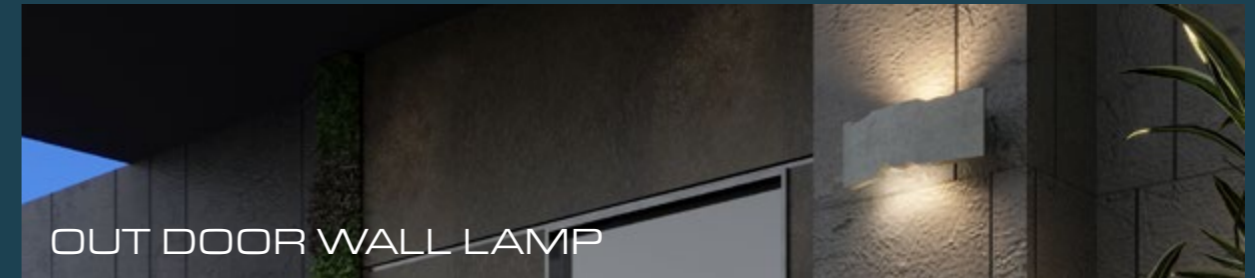
PICTOR

The PICTOR outdoor spotlight series serves as a classic all-rounder, offering an extensive range of configurations that cover a wide area. Its stable quality control contributes to effective outdoor illumination.



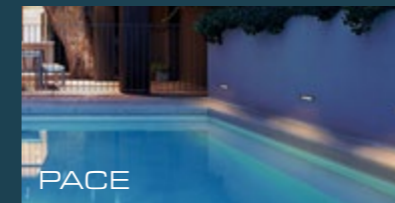
STEVE

The STEVE light beam series features a unique optical structure, allowing the fixtures to be installed on the ground or walls. Its fluidic design seamlessly integrates with spatial aesthetics, and the 8° beam angle can outline linear light patterns on the ground or walls.



OUT DOOR WALL LAMP

The outdoor wall lamp series features an integrated architectural lighting design, encompassing ground lights, surface-emitting lights, narrow-angle lights, and frame-type wall lights to meet outdoor wall lighting needs.



PACE

The PACE outdoor ground lamp series offers six different lighting distributions, allowing combinations of round/square shapes and various lighting distributions based on the environment. With options for both high and low voltage, it can adapt to different control methods for integrated use.



QUIVER

The QUIVER classic cylindrical wall lamp series combines a timeless exterior design with powerful optics, offering a variety of angle options. Its 6° ultra-focused optics effortlessly cover walls up to 10 meters away.



SCULTURA

The SCULTURA concrete wall lamp series seeks value through concrete, crafting a "perfect" form under an incomplete look. It embodies the beauty of imperfection - like the iconic Venus de Milo. Artistic vision revealed its beauty, making it timeless. To imaginative eyes, its endless allure stems from embracing change and variation.



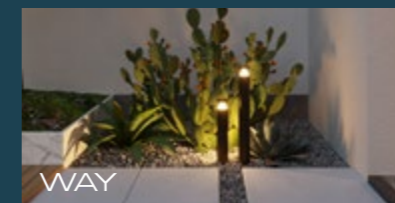
GARDEN LIGHT

The garden light series conveys FLUA's profound understanding of courtyard lighting, emphasizing the integration of architectural design, with all products deeply embedded in the design center.



LOTOS

The LOTOS outdoor pole lamp series, with its exceptional exterior design, places outdoor luminaires in the courtyard like plants. The gentle starlight falls on the courtyard, spreading warmth from underfoot to the heart.



WAY

The WAY outdoor pole lamp provides 360° downward illumination, taking inspiration from the image of a lighthouse. Lighting up at night symbolizes protection and waiting, guiding everyone returning home. It is highly suitable for villa and hotel outdoor courtyard areas.


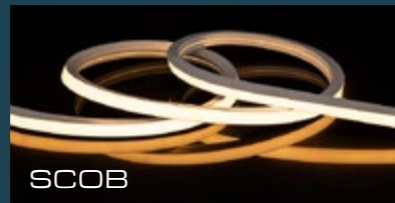


SPHERA

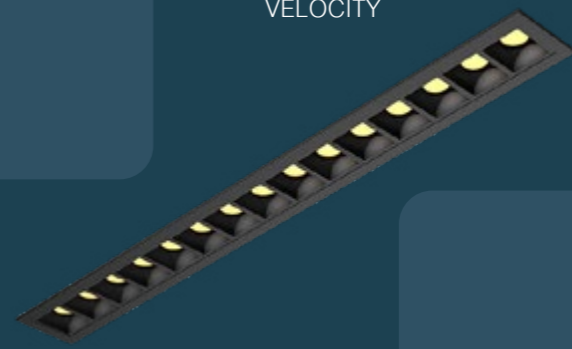
The SPHERA concrete courtyard lamp series integrates lighting into architecture, using concrete as the base material. This design concept combines illumination and architecture, featuring a circular semi-hollow shape. The special optical material in the middle spreads light downwards, making the product suitable for outdoor lawn areas of villas, clubs, and more.




FLUA LED Strip utilizes high-standard encapsulated LED beads. The product range is extensive, offering options such as CCT, RGB, COB, ultra-long distance, and varying IP ratings including IP33/55/67/68. It is widely applicable in indoor, outdoor, and advertising scenarios.




VELOCITY




PROFILE ON



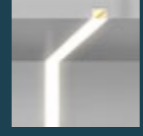
SWAN



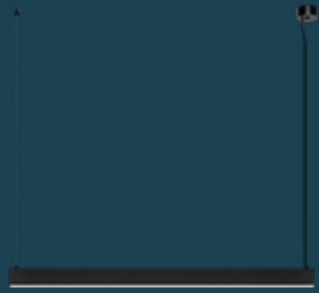
ARES



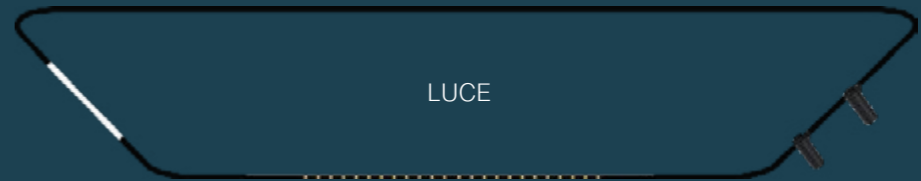
ECO



PROFILE IN



SILO



LUCE

A collection of product images and icons for various lighting solutions. The items include: PURI logo; VELOCITY LED strip; PROFILE ON LED strip; SWAN spotlight; ARES spotlight; ECO spotlight; PROFILE IN LED strip; SILO LED strip; and LUCE LED strip. Each item is accompanied by a small square icon, some of which are empty.

DRIART®



Control Panel



Smart Remote



Control module



Smart curtain track



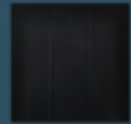
Knob scene switch



Smart wall socket



Smart Finder



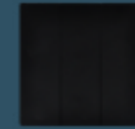
Smart Wall Switch



Intelligent door lock



Smart HD Camera



Smart Scenario Switch



Smart Floor Heating Wall Switch



Human infrared sensing



Smart Air Conditioner Wall Switch



Light-sensitive Hygrothermgraph



Smart speaker



Smart Switch Module



Door Magnetic Sensor



Air Conditioning Companion

FLUA.S.R.L

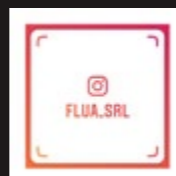
VIA PAOLO SARPI 60,20154
MILANO,ITALY CAP 20121
Tel: +39-0249539635
E-mail: info@flua.com
www.flua.it



FLUA
WEBSITE



FOLLOW US ON
FACEBOOK



FOLLOW US ON
INSTAGRAM



CONTACT US ON
WHATSAPP